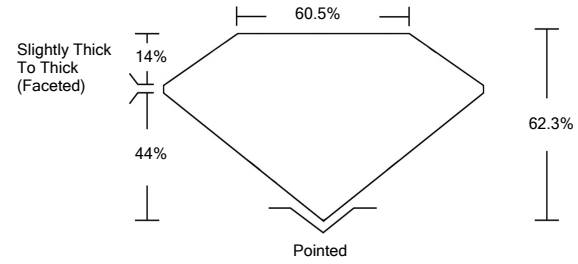




LG468104921

LABORATORY GROWN DIAMOND REPORT

PROPORTIONS



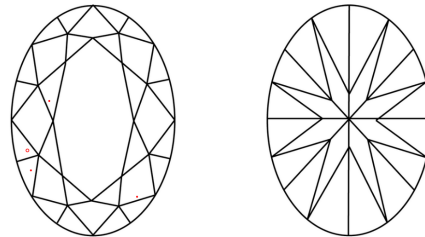
GRADING SCALES

Table with 5 columns for Color Grading Scale (CL, NC, FT, VLT, LT) and Clarity (10x) Grading Scale (FL, IF, VVS, VS, SI, I).

The laboratory grown diamond described in this Report (Report) has been graded, tested, analyzed, examined and/or inscribed by International Gemological Institute (IGI). A laboratory grown diamond is one that has essentially the same chemical, physical and optical properties as a mined diamond...

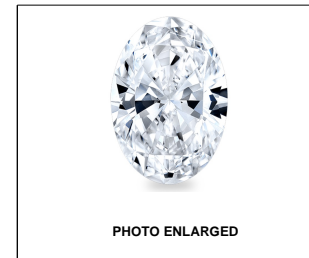
© INTERNATIONAL GEMOLOGICAL INSTITUTE, INC.

CLARITY CHARACTERISTICS



KEY TO SYMBOLS

Red symbols indicate internal characteristics. Green symbols indicate external characteristics.



LABGROWN IGI LG468104921

LASERSCRIBESM

03/25/2021

IGI Report Number LG468104921

Shape and Cutting Style OVAL BRILLIANT

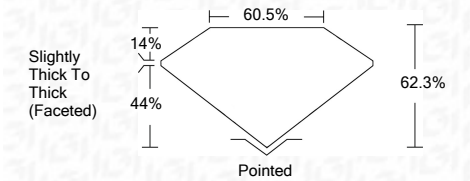
Measurements 10.42 x 7.54 x 4.70 mm

GRADING RESULTS

Carat Weight 2.35 CARATS

Color Grade I

Clarity Grade VS 1



ADDITIONAL GRADING INFORMATION

Polish EXCELLENT

Symmetry EXCELLENT

Fluorescence NONE

Inscription(s) LABGROWN IGI LG468104921

Comments: This Laboratory Grown Diamond was created by Chemical Vapor Deposition (CVD) growth process and may include post-growth treatment. Type IIa



IGI

Summary table of diamond characteristics: IGI Report No. LG468104921, OVAL BRILLIANT, 10.42 x 7.54 x 4.70 mm, 2.35 CARATS, Color Grade I, Clarity Grade VS 1, Depth 62.3%, Table 14%, Girdle 44%, Slightly Thick To Thick (Faceted), Pointed, EXCELLENT Polish, EXCELLENT Symmetry, NONE Fluorescence, LABGROWN IGI LG468104921 Inscription(s).

This Laboratory Grown Diamond was created by Chemical Vapor Deposition (CVD) growth process and may include post-growth treatment. Type IIa

