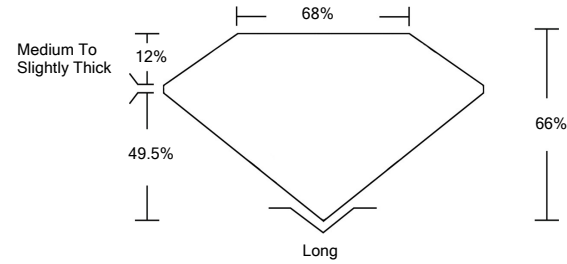




LG483106612

LABORATORY GROWN DIAMOND REPORT

PROPORTIONS



GRADING SCALES

Table with 5 columns for Color Grading Scale (CL, NC, FT, VLT, LT) and Clarity (10x) Grading Scale (FL, IF, VVS, VS, SI, I).

The laboratory grown diamond described in this Report (Report) has been graded, tested, analyzed, examined and/or inscribed by International Gemological Institute (IGI). A laboratory grown diamond is one that has essentially the same chemical, physical and optical properties as a mined diamond...

© INTERNATIONAL GEMOLOGICAL INSTITUTE, INC.

07/07/2021

IGI Report Number LG483106612

Shape and Cutting Style EMERALD CUT

Measurements 9.55 X 6.85 X 4.52 MM

GRADING RESULTS

Carat Weight 3.06 CARATS

Color Grade E

Clarity Grade VS 1

07/07/2021

IGI Report Number LG483106612

Shape and Cutting Style EMERALD CUT

Measurements 9.55 X 6.85 X 4.52 MM

GRADING RESULTS

Carat Weight 3.06 CARATS

Color Grade E

Clarity Grade VS 1

ADDITIONAL GRADING INFORMATION

Polish EXCELLENT

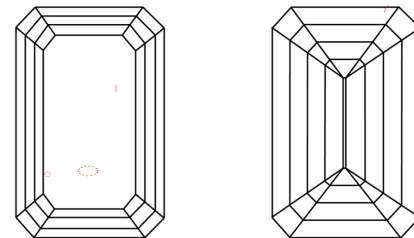
Symmetry EXCELLENT

Fluorescence NONE

Inscription(s) LABGROWN IGI LG483106612

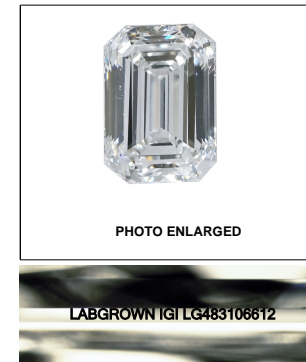
Comments: This Laboratory Grown Diamond was created by Chemical Vapor Deposition (CVD) growth process and may include post-growth treatment. Type IIa

CLARITY CHARACTERISTICS

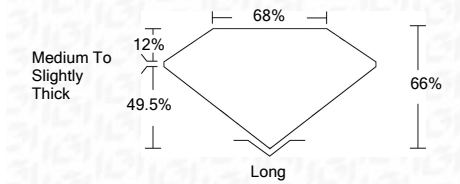


KEY TO SYMBOLS

Red symbols indicate internal characteristics. Green symbols indicate external characteristics.



LASERSCRIBESM



ADDITIONAL GRADING INFORMATION

Polish EXCELLENT

Symmetry EXCELLENT

Fluorescence NONE

Inscription(s) LABGROWN IGI LG483106612

Comments: This Laboratory Grown Diamond was created by Chemical Vapor Deposition (CVD) growth process and may include post-growth treatment. Type IIa



IGI

07/07/2021 IGI Report No. LG483106612 EMERALD CUT 9.55 X 6.85 X 4.52 MM 3.06 CARATS E VS 1 68% 68% Medium To Slightly Thick Long EXCELLENT EXCELLENT NONE LABGROWN IGI LG483106612

This Laboratory Grown Diamond was created by Chemical Vapor Deposition (CVD) growth process and may include post-growth treatment. Type IIa

