



ELECTRONIC COPY

LABORATORY GROWN DIAMOND REPORT

July 19, 2022

IGI Report Number **LG538277128**

Description

LABORATORY GROWN
DIAMOND

Shape and Cutting Style **OVAL BRILLIANT**

Measurements 12.86 X 9.41 X 5.97 MM

GRADING RESULTS

Carat Weight 5.01 CARATS

Color Grade F

Clarity Grade VVS 2

ADDITIONAL GRADING INFORMATION

Polish EXCELLENT

Symmetry **EXCELLENT**

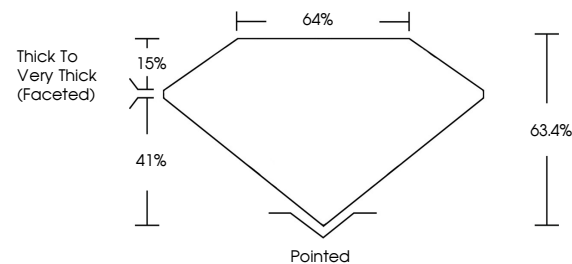
Fluorescence **NONE**

Inscription(s) LABGROWN IGI LG538277128

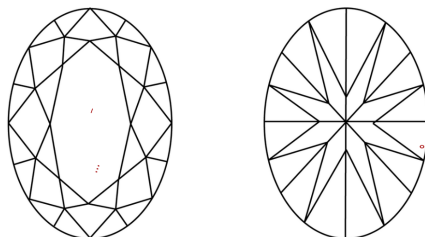
Comments: This Laboratory Grown Diamond was created by Chemical Vapor Deposition (CVD) growth process and may include post-growth treatment.
Type IIa

LG538277128

PROPORTIONS



CLARITY CHARACTERISTICS

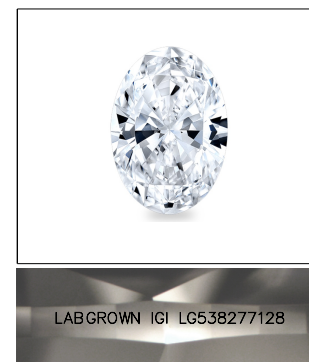


KEY TO SYMBOLS

Red symbols indicate internal characteristics.
Green symbols indicate external characteristics.

GRADING SCALES

COLOR GRADING SCALE	CL		NC	FT	VLT	LT
	COLORLESS D-F		NEAR COLORLESS G-J	FAINT K-M	VERY LIGHT N-R	LIGHT S-Z
CLARITY (10x) GRADING SCALE	FL	IF	VVS	VS	SI	I
	FLAWLESS INTERNALLY FLAWLESS		VERY VERY SLIGHTLY INCLUDED	VERY SLIGHTLY INCLUDED	SLIGHTLY INCLUDED	INCLUDED

LASERSCRIBESM

Sample Image Used



© IGI 2020, International Gemological Institute

FD - 10 20

LABORATORY GROWN DIAMOND REPORT

July 19, 2022	
IGI Report Number	LG538277128
Description	LABORATORY GROWN

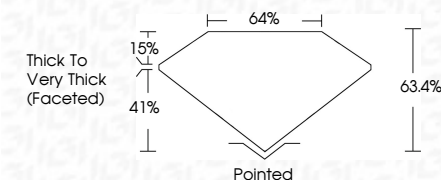
Shape and Cutting Style **OVAL BRILLIANT**

Measurements **12.86 X 9.41 X 5.97 MM**

GRADING RESULTS

Carat Weight **5.01 CARATS**

Color Grade	F
-------------	---

Clarity Grade VVS 2

ADDITIONAL GRADING INFORMATION

Polish **EXCELLENT**

Symmetry **EXCELLENT**

Fluorescence **NONE**

Inscription(s) LABGROWN IGI LG538277128

Comments: This Laboratory Grown Diamond was created by Chemical Vapor Deposition (CVD) growth process and may include post-growth treatment.
Type IIa



July 19, 2022	GI Patent No. US68277128	5,01 CARATS
GI Serial No. US68277128	12.45 X 9.41 X 5.97 MM	VVS 2
EXCELLENT	Color Grade	63.4%
EXCELLENT	Clarity Grade	54%
EXCELLENT	Depth	Thick to Very Thick (faceted)
EXCELLENT	Table	Portined
EXCELLENT	Girdle	EXCELLENT
EXCELLENT	Culet	EXCELLENT
EXCELLENT	Polish	EXCELLENT
EXCELLENT	Symmetry	EXCELLENT
EXCELLENT	Fluorescence	NONE
EXCELLENT	Inscriptions (s)	Laboratory No. US68277128
EXCELLENT	Comments:	This Laboratory Grown Diamond was created by Chemical Vapor Deposition (CVD) growth process and may include post-growth treatment.
EXCELLENT	Type Ia	