



ELECTRONIC COPY

LABORATORY GROWN DIAMOND REPORT

October 12, 2022
IGI Report Number LG550232077
Description LABORATORY GROWN DIAMOND
Shape and Cutting Style ROUND BRILLIANT
Measurements 6.46 - 6.48 X 3.91 MM

GRADING RESULTS

Carat Weight 1.01 CARAT
Color Grade D
Clarity Grade INTERNALLY FLAWLESS
Cut Grade IDEAL

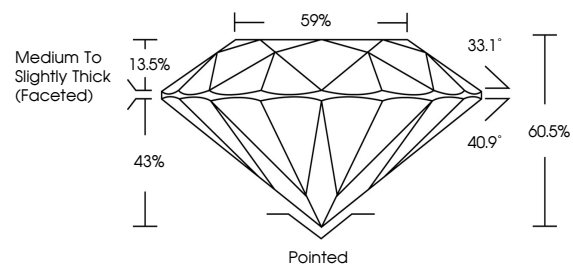
ADDITIONAL GRADING INFORMATION

Polish EXCELLENT
Symmetry EXCELLENT
Fluorescence NONE
Inscription(s) LABGROWN (IGI) LG550232077

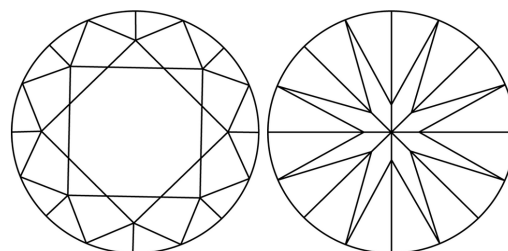
Comments: HEARTS & ARROWS
As Grown - No indication of post-growth treatment.
This Laboratory Grown Diamond was created by High Pressure High Temperature (HPHT) growth process.
Type II

LG550232077

PROPORTIONS



CLARITY CHARACTERISTICS



KEY TO SYMBOLS

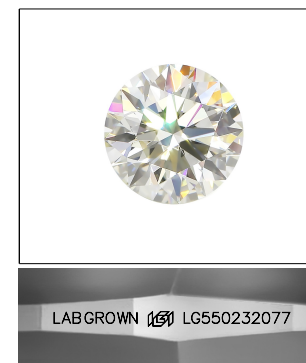
Red symbols indicate internal characteristics.
Green symbols indicate external characteristics.



www.igi.org

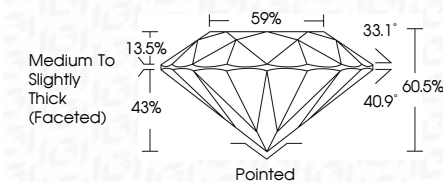
GRADING SCALES

Table showing color grading scales (CL, NC, FT, VLT, LT) and clarity grading scales (FL, IF, VVS, VS, SI, I).



LASERSCRIBE SM
Sample Image Used

October 12, 2022
IGI Report Number LG550232077
Description LABORATORY GROWN DIAMOND
Shape and Cutting Style ROUND BRILLIANT
Measurements 6.46 - 6.48 X 3.91 MM
GRADING RESULTS
Carat Weight 1.01 CARAT
Color Grade D
Clarity Grade INTERNALLY FLAWLESS
Cut Grade IDEAL



ADDITIONAL GRADING INFORMATION

Polish EXCELLENT
Symmetry EXCELLENT
Fluorescence NONE
Inscription(s) LABGROWN (IGI) LG550232077

Comments: HEARTS & ARROWS
As Grown - No indication of post-growth treatment.
This Laboratory Grown Diamond was created by High Pressure High Temperature (HPHT) growth process.
Type II



Summary table of diamond details: IGI Report No LG550232077, ROUND BRILLIANT, 6.46 - 6.48 X 3.91 MM, 1.01 CARAT, D, IDEAL, 60.5%, 59%, Medium To Slightly Thick (Faceted), Pointed, EXCELLENT, EXCELLENT, NONE, LABGROWN (IGI) LG550232077.