



**INTERNATIONAL  
GEMOLOGICAL  
INSTITUTE**

**ELECTRONIC COPY**

**LABORATORY GROWN  
DIAMOND REPORT**

**LG559285068**

**IGI LABORATORY GROWN  
DIAMOND ID REPORT**

December 9, 2022

IGI Report Number **LG559285068**

**ROUND BRILLIANT**

**4.48 - 4.51 X 2.80 MM**

|                |                            |
|----------------|----------------------------|
| Carat Weight   | 0.34 CARAT                 |
| Color Grade    | D                          |
| Clarity Grade  | VVS 2                      |
| Cut Grade      | IDEAL                      |
| Polish         | EXCELLENT                  |
| Symmetry       | EXCELLENT                  |
| Fluorescence   | NONE                       |
| Inscription(s) | LABGROWN (IGI) LG559285068 |

Comments: As Grown - No indication of post-growth treatment. This Laboratory Grown Diamond was created by High Pressure High Temperature (HPHT) growth process. Type II

**LABORATORY GROWN DIAMOND REPORT**

**IGI LABORATORY GROWN DIAMOND IDENTIFICATION REPORT**

December 9, 2022

IGI Report Number **LG559285068**

Description **LABORATORY GROWN DIAMOND**

Shape and Cutting Style **ROUND BRILLIANT**

Measurements **4.48 - 4.51 X 2.80 MM**

**GRADING RESULTS**

Carat Weight **0.34 CARAT**

Color Grade **D**

Clarity Grade **VVS 2**

Cut Grade **IDEAL**

**ADDITIONAL GRADING INFORMATION**

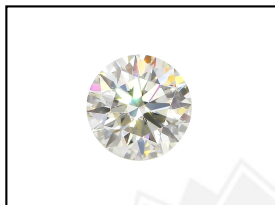
Polish **EXCELLENT**

Symmetry **EXCELLENT**

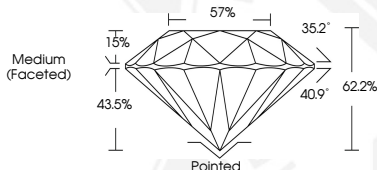
Fluorescence **NONE**

Inscription(s) **LABGROWN (IGI) LG559285068**

Comments: As Grown - No indication of post-growth treatment. This Laboratory Grown Diamond was created by High Pressure High Temperature (HPHT) growth process. Type II



**LASERSCRIBE<sup>SM</sup>**  
Sample Images Used



THIS DOCUMENT WAS PRODUCED WITH THE FOLLOWING SECURITY MEASURES: SPECIAL DOCUMENT PAPER, INK SCREENS, WATERMARK, BACKGROUND DESIGN, HOLOGRAM AND OTHER SECURITY FEATURES NOT LISTED AND DO EXCEED DOCUMENT SECURITY INDUSTRY GUIDELINES.

For terms & conditions and to verify this report, please visit [www.igi.org](http://www.igi.org)

**IGI LABORATORY GROWN  
DIAMOND ID REPORT**

December 9, 2022

IGI Report Number **LG559285068**

**ROUND BRILLIANT**

**4.48 - 4.51 X 2.80 MM**

|                |                            |
|----------------|----------------------------|
| Carat Weight   | 0.34 CARAT                 |
| Color Grade    | D                          |
| Clarity Grade  | VVS 2                      |
| Cut Grade      | IDEAL                      |
| Polish         | EXCELLENT                  |
| Symmetry       | EXCELLENT                  |
| Fluorescence   | NONE                       |
| Inscription(s) | LABGROWN (IGI) LG559285068 |

Comments: As Grown - No indication of post-growth treatment. This Laboratory Grown Diamond was created by High Pressure High Temperature (HPHT) growth process. Type II