



ELECTRONIC COPY

LABORATORY GROWN DIAMOND REPORT

January 20, 2023	
IGI Report Number	LG564371127
Description	LABORATORY GROWN DIAMOND
Shape and Cutting Style	ROUND BRILLIANT
Measurements	9.17 - 9.25 X 5.58 MM

GRADING RESULTS

Carat Weight	3.00 CARATS
Color Grade	G
Clarity Grade	VVS 2
Cut Grade	EXCELLENT

ADDITIONAL GRADING INFORMATION

Polish	EXCELLENT
Symmetry	EXCELLENT
Fluorescence	NONE

Inscription(s) LABGROWN 161 LG564371127

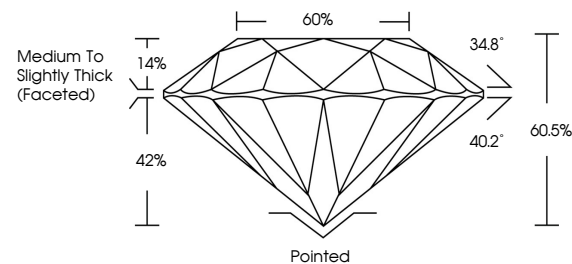
Comments: This Laboratory Grown Diamond was created by Chemical Vapor Deposition (CVD) growth process and may include post-growth treatment.
Type IIa

LABORATORY GROWN DIAMOND REPORT

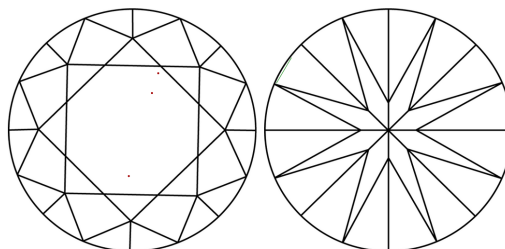
LG564371127

Report verification at igi.org

PROPORTIONS



CLARITY CHARACTERISTICS



KEY TO SYMBOLS

Red symbols indicate internal characteristics.
Green symbols indicate external characteristics.

LABORATORY GROWN
DIAMOND REPORT

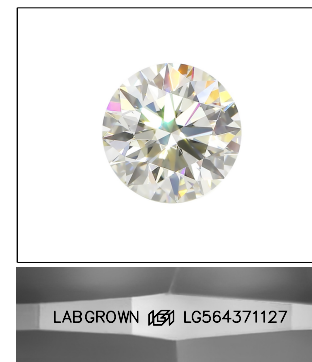
GRADING SCALES

CLARITY

IF	VVS ¹⁻²	VS ¹⁻²	SI ¹⁻²	I ¹⁻³
Internally Flawless	Very Very Slightly Included	Very Slightly Included	Slightly Included	Included

COLOR

D E F G H I J Faint Very Light Light

LASERSCRIBESM

Sample Image Used



© IGI 2020, International Gemological Institute

FD - 10 20

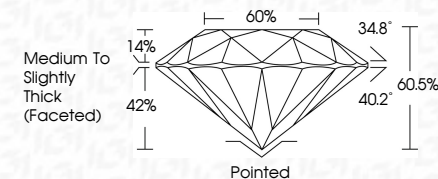
www.igi.org

LABORATORY GROWN DIAMOND REPORT

January 20, 2023	
IGI Report Number	LG564371127
Description	LABORATORY GROWN DIAMOND
Shape and Cutting Style	ROUND BRILLIANT
Measurements	9.17 - 9.25 X 5.58 MM

GRADING RESULTS

Carat Weight	3.00 CARATS
Color Grade	G
Clarity Grade	VVS 2
Cut Grade	EXCELLENT



ADDITIONAL GRADING INFORMATION

Polish	EXCELLENT
Symmetry	EXCELLENT
Fluorescence	NONE
Inscription(s)	LABGROWN (151) LG564371127

Comments: This Laboratory Grown Diamond was created by Chemical Vapor Deposition (CVD) growth process and may include post-growth treatment.
Type IIa



January 20, 2023	Carat Weight	Clarity Grade	Color Grade	2.17 - 2.25 X 5.88 MM
GI Report No LG564371127	Color	Cut Grade		
ROUND BRILLIANT		Depth		
		Table		
		Girdle		
		Culet		
		Polish		
		Symmetry		
		Fluorescence		
		Annotations (1)		
		Annotations (2)		
		Annotations (3)		
		Annotations (4)		
		Annotations (5)		
		Annotations (6)		
		Annotations (7)		
		Annotations (8)		
		Annotations (9)		
		Annotations (10)		
		Annotations (11)		
		Annotations (12)		
		Annotations (13)		
		Annotations (14)		
		Annotations (15)		
		Annotations (16)		
		Annotations (17)		
		Annotations (18)		
		Annotations (19)		
		Annotations (20)		
		Annotations (21)		
		Annotations (22)		
		Annotations (23)		
		Annotations (24)		
		Annotations (25)		
		Annotations (26)		
		Annotations (27)		
		Annotations (28)		
		Annotations (29)		
		Annotations (30)		
		Annotations (31)		
		Annotations (32)		
		Annotations (33)		
		Annotations (34)		
		Annotations (35)		
		Annotations (36)		
		Annotations (37)		
		Annotations (38)		
		Annotations (39)		
		Annotations (40)		
		Annotations (41)		
		Annotations (42)		
		Annotations (43)		
		Annotations (44)		
		Annotations (45)		
		Annotations (46)		
		Annotations (47)		
		Annotations (48)		
		Annotations (49)		
		Annotations (50)		
		Annotations (51)		
		Annotations (52)		
		Annotations (53)		
		Annotations (54)		
		Annotations (55)		
		Annotations (56)		
		Annotations (57)		
		Annotations (58)		
		Annotations (59)		
		Annotations (60)		
		Annotations (61)		
		Annotations (62)		
		Annotations (63)		
		Annotations (64)		
		Annotations (65)		
		Annotations (66)		
		Annotations (67)		
		Annotations (68)		
		Annotations (69)		
		Annotations (70)		
		Annotations (71)		
		Annotations (72)		
		Annotations (73)		
		Annotations (74)		
		Annotations (75)		
		Annotations (76)		
		Annotations (77)		
		Annotations (78)		
		Annotations (79)		
		Annotations (80)		
		Annotations (81)		
		Annotations (82)		
		Annotations (83)		
		Annotations (84)		
		Annotations (85)		
		Annotations (86)		
		Annotations (87)		
		Annotations (88)		
		Annotations (89)		
		Annotations (90)		
		Annotations (91)		
		Annotations (92)		
		Annotations (93)		
		Annotations (94)		
		Annotations (95)		
		Annotations (96)		
		Annotations (97)		
		Annotations (98)		
		Annotations (99)		
		Annotations (100)		
		Annotations (101)		

Comments:
This Laboratory Grown Diamond was created by Chemical Vapor Deposition (CVD) growth process and may include post-growth treatment.