



**INTERNATIONAL  
GEMOLOGICAL  
INSTITUTE**

**ELECTRONIC COPY**

**LABORATORY GROWN  
DIAMOND REPORT**

**LG581339432**

**IGI LABORATORY GROWN  
DIAMOND ID REPORT**

May 9, 2023

IGI Report Number **LG581339432**

**SQUARE CUSHION BRILLIANT**

**4.69 X 4.57 X 3.00 MM**

Carat Weight	0.55 CARAT
Color Grade	D
Clarity Grade	VS 1
Polish	EXCELLENT
Symmetry	EXCELLENT
Fluorescence	NONE
Inscription(s)	LG581339432

Comments: As Grown - No indication of post-growth treatment. This Laboratory Grown Diamond was created by High Pressure High Temperature (HPHT) growth process. Type II

**LABORATORY GROWN DIAMOND REPORT**

**IGI LABORATORY GROWN DIAMOND IDENTIFICATION REPORT**

May 9, 2023

IGI Report Number

LG581339432

Description

LABORATORY GROWN DIAMOND

Shape and Cutting Style

SQUARE CUSHION BRILLIANT

Measurements

4.69 X 4.57 X 3.00 MM

**GRADING RESULTS**

Carat Weight

0.55 CARAT

Color Grade

D

Clarity Grade

VS 1

**ADDITIONAL GRADING INFORMATION**

Polish

EXCELLENT

Symmetry

EXCELLENT

Fluorescence

NONE

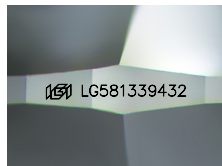
Inscription(s)

LG581339432

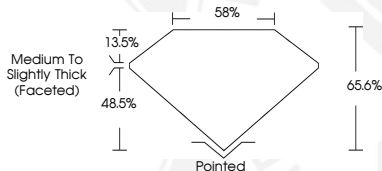
Comments: As Grown - No indication of post-growth treatment.

This Laboratory Grown Diamond was created by High Pressure High Temperature (HPHT) growth process.

Type II



Sample Image Used



**IGI LABORATORY GROWN  
DIAMOND ID REPORT**

May 9, 2023

IGI Report Number **LG581339432**

**SQUARE CUSHION BRILLIANT**

**4.69 X 4.57 X 3.00 MM**

Carat Weight	0.55 CARAT
Color Grade	D
Clarity Grade	VS 1
Polish	EXCELLENT
Symmetry	EXCELLENT
Fluorescence	NONE
Inscription(s)	LG581339432

Comments: As Grown - No indication of post-growth treatment. This Laboratory Grown Diamond was created by High Pressure High Temperature (HPHT) growth process. Type II

THIS DOCUMENT WAS PRODUCED WITH THE FOLLOWING SECURITY MEASURES: SPECIAL DOCUMENT PAPER, INK SCREENS, WATERMARK, BACKGROUND DESIGN, HOLOGRAM AND OTHER SECURITY FEATURES NOT LISTED AND DO EXCEED DOCUMENT SECURITY INDUSTRY GUIDELINES.

For terms & conditions and to verify this report, please visit [www.igi.org](http://www.igi.org)