

**ELECTRONIC COPY**

## LABORATORY GROWN DIAMOND REPORT

August 31, 2023	
IGI Report Number	LG597388374
Description	LABORATORY GROWN DIAMOND
Shape and Cutting Style	CUSHION BRILLIANT
Measurements	7.97 X 5.95 X 3.79 MM

## GRADING RESULTS

Carat Weight	1.52 CARAT
Color Grade	G
Clarity Grade	VS 1

### ADDITIONAL GRADING INFORMATION

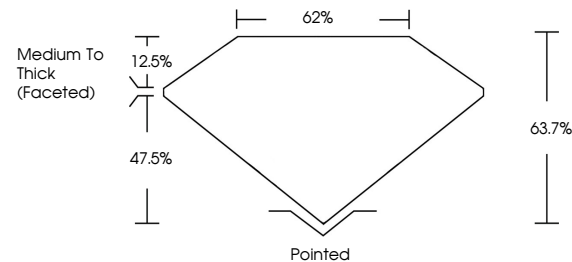
Polish	EXCELLENT
Symmetry	EXCELLENT
Fluorescence	NONE
Inscription(s)	 LG597388374

Comments: As Grown - No indication of post-growth treatment.  
This Laboratory Grown Diamond was created by High Pressure High Temperature (HPHT) growth process.  
Type II  
Faint Blue

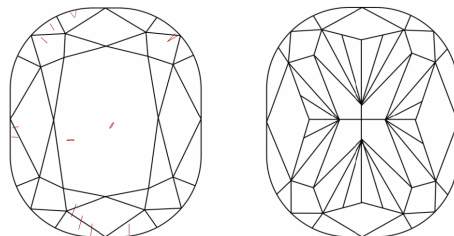
## LABORATORY GROWN DIAMOND REPORT

LG597388374  
Report verification at [igi.org](https://igi.org)

## PROPORTIONS



## CLARITY CHARACTERISTICS



### KEY TO SYMBOLS

Red symbols indicate internal characteristics.  
Green symbols indicate external characteristics.

LABORATORY GROWN  
DIAMOND REPORT

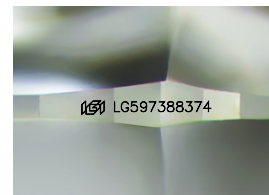
## GRADING SCALES

## CLARITY

IF	VVS <sup>1-2</sup>	VS <sup>1-2</sup>	SI <sup>1-2</sup>	I <sup>1-3</sup>
Internally Flawless	Very Very Slightly Included	Very Slightly Included	Slightly Included	Included

**COLOR**

D E F G H I J Faint Very Light Light



Sample Image Used



© IGI 2020, International Gemological Institute

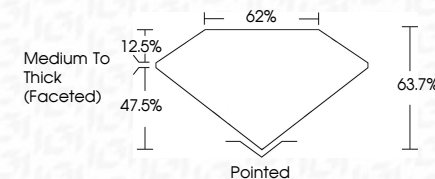
FD - 10 20




THIS DOCUMENT WAS PRODUCED WITH THE FOLLOWING SECURITY MEASURES: SPECIAL DOCUMENT PAPER, INK SCREENS, WATERMARK, BACKGROUND DESIGNS, HOLOGRAM AND OTHER SECURITY FEATURES NOT LISTED AND DO EXCEED DOCUMENT SECURITY INDUSTRY GUIDELINES

## LABORATORY GROWN DIAMOND REPORT

August 31, 2023	
IGI Report Number	LG597388374
Description	LABORATORY GROWN DIAMOND
Shape and Cutting Style	CUSHION BRILLIANT
Measurements	7.97 X 5.95 X 3.79 MM
<b>GRADING RESULTS</b>	
Carat Weight	1.52 CARAT
Color Grade	G
Clarity Grade	VS 1



### ADDITIONAL GRADING INFORMATION

Polish	EXCELLENT
Symmetry	EXCELLENT
Fluorescence	NONE
Inscription(s)	 LG597388374
Comments: As Grown - No indication of post-growth treatment.	
This Laboratory Grown Diamond was created by High Pressure High Temperature (HPHT) growth process.	
Type II	
Faint Blue	



August 31, 2023	Q1 Report No LG597388374
CSHION BRILLANT	
1.52 CARAT	
G	
Vs 1	
63.7%	
62%	
Medium to Thick (Faceted)	
Polished	
EXCELLENT	
EXCELLENT	
NONE	
1691 LG597388374	
Comments: 1 - No indication of post-growth treatment.	
This Laboratory Growth Diamond was created by High Pressure High Temperature (HPHT) growth process.	
Type II	

Comments:  
As Grown - No Indication of post-growth treatment.  
This Laboratory Grown Diamond was created by High Pressure High temperature (HPHT) growth process.  
Type II  
Carat 0.11