



**INTERNATIONAL  
GEMOLOGICAL  
INSTITUTE**

**ELECTRONIC COPY**

**LABORATORY GROWN  
DIAMOND REPORT**

**LG617424594**

**IGI LABORATORY GROWN  
DIAMOND ID REPORT**

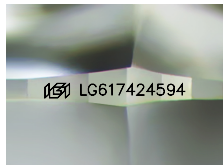
January 24, 2024  
IGI Report Number **LG617424594**  
**SQUARE CUSHION BRILLIANT**  
**5.41 X 5.17 X 3.36 MM**  
Carat Weight 0.82 CARAT  
Color Grade D  
Clarity Grade VS 2  
Polish EXCELLENT  
Symmetry EXCELLENT  
Fluorescence NONE  
Inscription(s) LG617424594

Comments: As Grown - No indication of post-growth treatment. This Laboratory Grown Diamond was created by High Pressure High Temperature (HPHT) growth process. Type II

**LABORATORY GROWN DIAMOND REPORT**

**IGI LABORATORY GROWN DIAMOND IDENTIFICATION REPORT**

January 24, 2024  
IGI Report Number LG617424594  
Description LABORATORY GROWN DIAMOND  
Shape and Cutting Style SQUARE CUSHION BRILLIANT  
Measurements 5.41 X 5.17 X 3.36 MM



Sample Image Used

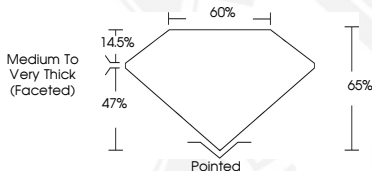
**GRADING RESULTS**

Carat Weight 0.82 CARAT  
Color Grade D  
Clarity Grade VS 2

**ADDITIONAL GRADING INFORMATION**

Polish EXCELLENT  
Symmetry EXCELLENT  
Fluorescence NONE  
Inscription(s) LG617424594

Comments: As Grown - No indication of post-growth treatment. This Laboratory Grown Diamond was created by High Pressure High Temperature (HPHT) growth process. Type II



**IGI LABORATORY GROWN  
DIAMOND ID REPORT**

January 24, 2024  
IGI Report Number **LG617424594**  
**SQUARE CUSHION BRILLIANT**  
**5.41 X 5.17 X 3.36 MM**  
Carat Weight 0.82 CARAT  
Color Grade D  
Clarity Grade VS 2  
Polish EXCELLENT  
Symmetry EXCELLENT  
Fluorescence NONE  
Inscription(s) LG617424594

Comments: As Grown - No indication of post-growth treatment. This Laboratory Grown Diamond was created by High Pressure High Temperature (HPHT) growth process. Type II

THIS DOCUMENT WAS PRODUCED WITH THE FOLLOWING SECURITY MEASURES: SPECIAL DOCUMENT PAPER, INK SCREENS, WATERMARK, BACKGROUND DESIGN, HOLOGRAM AND OTHER SECURITY FEATURES NOT LISTED AND DO EXCEED DOCUMENT SECURITY INDUSTRY GUIDELINES.

For terms & conditions and to verify this report, please visit [www.igi.org](http://www.igi.org)