



**INTERNATIONAL
GEMOLOGICAL
INSTITUTE**

ELECTRONIC COPY

**LABORATORY GROWN
DIAMOND REPORT**

LG620489967

**IGI LABORATORY GROWN
DIAMOND ID REPORT**

February 4, 2024
IGI Report Number **LG620489967**
ROUND BRILLIANT
5.18 - 5.22 X 3.18 MM
Carat Weight 0.53 CARAT
Color Grade D
Clarity Grade VVS 2
Cut Grade IDEAL
Polish EXCELLENT
Symmetry EXCELLENT
Fluorescence NONE
Inscription(s) LG620489967

Comments: As Grown - No indication of post-growth treatment. This Laboratory Grown Diamond was created by High Pressure High Temperature (HPHT) growth process. Type II

LABORATORY GROWN DIAMOND REPORT

IGI LABORATORY GROWN DIAMOND IDENTIFICATION REPORT

February 4, 2024
IGI Report Number LG620489967
Description LABORATORY GROWN DIAMOND
Shape and Cutting Style ROUND BRILLIANT
Measurements 5.18 - 5.22 X 3.18 MM

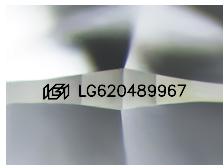
GRADING RESULTS

Carat Weight 0.53 CARAT
Color Grade D
Clarity Grade VVS 2
Cut Grade IDEAL

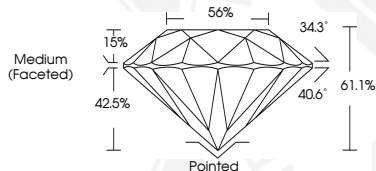
ADDITIONAL GRADING INFORMATION

Polish EXCELLENT
Symmetry EXCELLENT
Fluorescence NONE
Inscription(s) LG620489967

Comments: As Grown - No indication of post-growth treatment. This Laboratory Grown Diamond was created by High Pressure High Temperature (HPHT) growth process. Type II



Sample Image Used



**IGI LABORATORY GROWN
DIAMOND ID REPORT**

February 4, 2024
IGI Report Number **LG620489967**
ROUND BRILLIANT
5.18 - 5.22 X 3.18 MM
Carat Weight 0.53 CARAT
Color Grade D
Clarity Grade VVS 2
Cut Grade IDEAL
Polish EXCELLENT
Symmetry EXCELLENT
Fluorescence NONE
Inscription(s) LG620489967

Comments: As Grown - No indication of post-growth treatment. This Laboratory Grown Diamond was created by High Pressure High Temperature (HPHT) growth process. Type II



THIS DOCUMENT WAS PRODUCED WITH THE FOLLOWING SECURITY MEASURES: SPECIAL DOCUMENT PAPER, INK SCREENS, WATERMARK, BACKGROUND DESIGN, HOLOGRAM AND OTHER SECURITY FEATURES NOT LISTED AND DO EXCEED DOCUMENT SECURITY INDUSTRY GUIDELINES.

For terms & conditions and to verify this report, please visit www.igi.org