



**INTERNATIONAL  
GEMOLOGICAL  
INSTITUTE**

**ELECTRONIC COPY**

**LABORATORY GROWN  
DIAMOND REPORT**

**LG622499788**

**IGI LABORATORY GROWN  
DIAMOND ID REPORT**

February 23, 2024  
IGI Report Number **LG622499788**  
**CUT CORNERED RECTANGULAR  
MODIFIED BRILLIANT**  
**5.89 X 4.46 X 3.00 MM**  
Carat Weight 0.73 CARAT  
Color Grade D  
Clarity Grade VVS 2  
Polish EXCELLENT  
Symmetry EXCELLENT  
Fluorescence NONE  
Inscription(s) LG622499788

**LABORATORY GROWN DIAMOND REPORT**

**IGI LABORATORY GROWN DIAMOND IDENTIFICATION REPORT**

February 23, 2024  
IGI Report Number LG622499788  
Description LABORATORY GROWN DIAMOND  
Shape and Cutting Style CUT CORNERED RECTANGULAR MODIFIED  
BRILLIANT  
Measurements 5.89 X 4.46 X 3.00 MM

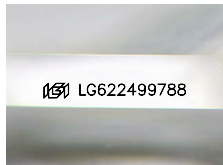
**GRADING RESULTS**

Carat Weight 0.73 CARAT  
Color Grade D  
Clarity Grade VVS 2

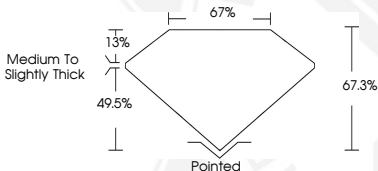
**ADDITIONAL GRADING INFORMATION**

Polish EXCELLENT  
Symmetry EXCELLENT  
Fluorescence NONE  
Inscription(s) LG622499788

Comments: As Grown - No indication of post-growth treatment.  
This Laboratory Grown Diamond was created by High Pressure High  
Temperature (HPHT) growth process.  
Type II



Sample Image Used



**IGI LABORATORY GROWN  
DIAMOND ID REPORT**

February 23, 2024  
IGI Report Number **LG622499788**  
**CUT CORNERED RECTANGULAR  
MODIFIED BRILLIANT**  
**5.89 X 4.46 X 3.00 MM**  
Carat Weight 0.73 CARAT  
Color Grade D  
Clarity Grade VVS 2  
Polish EXCELLENT  
Symmetry EXCELLENT  
Fluorescence NONE  
Inscription(s) LG622499788  
Comments: As Grown - No  
indication of post-growth  
treatment. This Laboratory Grown  
Diamond was created by High  
Pressure High Temperature (HPHT)  
growth process. Type II

THIS DOCUMENT WAS PRODUCED WITH THE FOLLOWING SECURITY MEASURES: SPECIAL DOCUMENT PAPER, INK SCREENS, WATERMARK, BACKGROUND DESIGN, HOLOGRAM AND OTHER SECURITY FEATURES NOT LISTED AND DO EXCEED DOCUMENT SECURITY INDUSTRY GUIDELINES.

For terms & conditions and to verify this report, please visit [www.igi.org](http://www.igi.org)