

**ELECTRONIC COPY**

## LABORATORY GROWN DIAMOND REPORT

|                         |                                      |
|-------------------------|--------------------------------------|
| March 18, 2024          |                                      |
| IGI Report Number       | LG625467356                          |
| Description             | LABORATORY GROWN<br>DIAMOND          |
| Shape and Cutting Style | SQUARE CUSHION MODIFIED<br>BRILLIANT |
| Measurements            | 5.67 X 5.66 X 3.81 MM                |

## GRADING RESULTS

|               |            |
|---------------|------------|
| Carat Weight  | 1.02 CARAT |
| Color Grade   | D          |
| Clarity Grade | VS 1       |

### ADDITIONAL GRADING INFORMATION

|              |           |
|--------------|-----------|
| Polish       | EXCELLENT |
| Symmetry     | EXCELLENT |
| Fluorescence | NONE      |

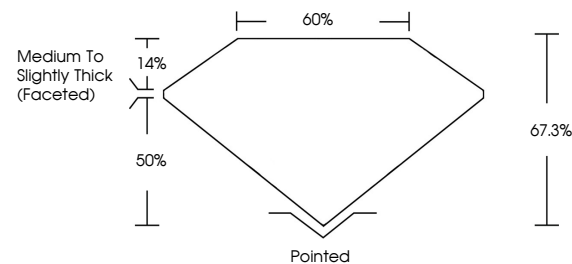
Inscription(s)  LG625467356

Comments: As Grown - No indication of post-growth treatment.  
This Laboratory Grown Diamond was created by High Pressure High Temperature (HPHT) growth process.  
Type II

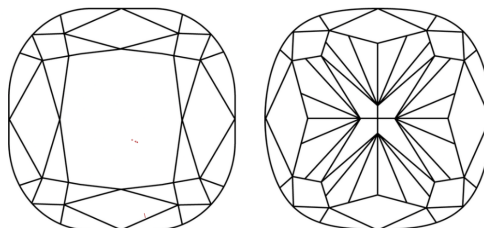
## LABORATORY GROWN DIAMOND REPORT

LG625467356  
Report verification at [igi.org](https://igi.org)

## PROPORTIONS



## CLARITY CHARACTERISTICS



### KEY TO SYMBOLS

Red symbols indicate internal characteristics.  
Green symbols indicate external characteristics.

LABORATORY GROWN  
DIAMOND REPORT

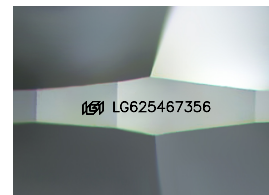
## GRADING SCALES

## CLARITY

| IF                     | VVS <sup>1-2</sup>             | VS <sup>1-2</sup>         | SI <sup>1-2</sup>    | I <sup>1-3</sup> |
|------------------------|--------------------------------|---------------------------|----------------------|------------------|
| Internally<br>Flawless | Very Very<br>Slightly Included | Very<br>Slightly Included | Slightly<br>Included | Included         |

**COLOR**

D E F G H I J Faint Very Light Light



Sample Image Used



© IGI 2020, International Gemological Institute

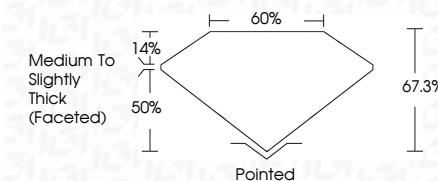
FD - 10 20



|                         |                                      |
|-------------------------|--------------------------------------|
| March 18, 2024          |                                      |
| IGI Report Number       | LG625467356                          |
| Description             | LABORATORY GROWN<br>DIAMOND          |
| Shape and Cutting Style | SQUARE CUSHION MODIFIED<br>BRILLIANT |
| Measurements            | 5.67 X 5.66 X 3.81 MM                |

## GRADING RESULTS

|               |            |
|---------------|------------|
| Carat Weight  | 1.02 CARAT |
| Color Grade   | D          |
| Clarity Grade | VS 1       |



### ADDITIONAL GRADING INFORMATION

|  |                            |
|--|----------------------------|
| Polish   | EXCELLEN                   |
| Symmetry   | EXCELLEN                   |
| Fluorescence   | NONI                       |
| Inscription(s)   | <del>1651</del> LG62546735 |
| Comments: As Grown - No indication of post-growth treatment.                                       |                            |
| This Laboratory Grown Diamond was created by High Pressure High Temperature (HPHT) growth process. |                            |
| Type II  |                            |

|                          |   |            |
|--------------------------|---|------------|
| March 18, 2024           | GI Report No LG526457856  | 1.02 CARAT |
| GI Report No LG526457856 | SQUARE CLUSION MODIFIED BRILLIANT   |            |
| 5.67 X 5.65 X 3.81 MM    |   |            |
| Corat Weight             | Color Grade   | D          |
| Clarity Grade            | Depth   | VS 1       |
| Table                    | Grade   | 67.3%      |
| Girdle                   |   | 60%        |
|                          | Medium to Slightly Thick Faceted  |            |
| Claret                   | Polished  |            |
| Polish                   | EXCELLENT   |            |
| Symmetry                 | EXCELLENT   |            |
| Fluorescence             | NONE  |            |
| Inscriptions(s)          | lg51 LG526457856  |            |
| Comments:                | No indication of post-growth treatment.   |            |
|                          | This Laboratory Growth Diamond was created by High Pressure High Temperature (HPHT) growth process. |            |
|                          | Type II   |            |