



**INTERNATIONAL  
GEMOLOGICAL  
INSTITUTE**

**ELECTRONIC COPY**

**LABORATORY GROWN  
DIAMOND REPORT**

**LG627431607**

**IGI LABORATORY GROWN  
DIAMOND ID REPORT**

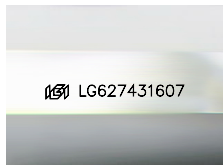
April 8, 2024  
IGI Report Number **LG627431607**  
**EMERALD CUT**  
**6.18 X 4.22 X 2.83 MM**  
Carat Weight 0.76 CARAT  
Color Grade FANCY VIVID BLUE  
Clarity Grade VVS 2  
Polish EXCELLENT  
Symmetry EXCELLENT  
Fluorescence NONE  
Inscription(s) LG627431607

Comments: This Laboratory Grown Diamond was created by Chemical Vapor Deposition (CVD) growth process. Indications of post-growth treatment.

**LABORATORY GROWN DIAMOND REPORT**

**IGI LABORATORY GROWN DIAMOND IDENTIFICATION REPORT**

April 8, 2024  
IGI Report Number LG627431607  
Description LABORATORY GROWN DIAMOND  
Shape and Cutting Style EMERALD CUT  
Measurements 6.18 X 4.22 X 2.83 MM



Sample Image Used

**GRADING RESULTS**

Carat Weight 0.76 CARAT  
Color Grade FANCY VIVID BLUE  
Clarity Grade VVS 2

**ADDITIONAL GRADING INFORMATION**

Polish EXCELLENT  
Symmetry EXCELLENT  
Fluorescence NONE  
Inscription(s) LG627431607

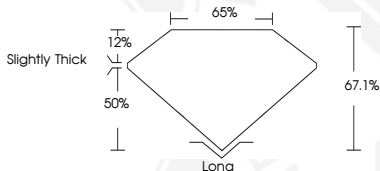
Comments: This Laboratory Grown Diamond was created by Chemical Vapor Deposition (CVD) growth process. Indications of post-growth treatment.



**IGI LABORATORY GROWN  
DIAMOND ID REPORT**

April 8, 2024  
IGI Report Number **LG627431607**  
**EMERALD CUT**  
**6.18 X 4.22 X 2.83 MM**  
Carat Weight 0.76 CARAT  
Color Grade FANCY VIVID BLUE  
Clarity Grade VVS 2  
Polish EXCELLENT  
Symmetry EXCELLENT  
Fluorescence NONE  
Inscription(s) LG627431607

Comments: This Laboratory Grown Diamond was created by Chemical Vapor Deposition (CVD) growth process. Indications of post-growth treatment.



THIS DOCUMENT WAS PRODUCED WITH THE FOLLOWING SECURITY MEASURES: SPECIAL DOCUMENT PAPER, INK SCREENS, WATERMARK, BACKGROUND DESIGN, HOLOGRAM AND OTHER SECURITY FEATURES NOT LISTED AND DO EXCEED DOCUMENT SECURITY INDUSTRY GUIDELINES.

For terms & conditions and to verify this report, please visit [www.igi.org](http://www.igi.org)