



ELECTRONIC COPY

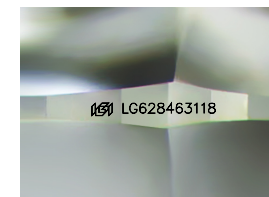
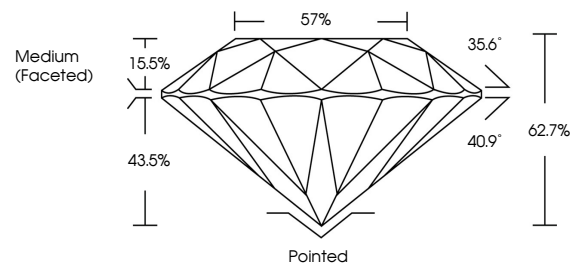
LG628463118
Report verification at igi.org



April 4, 2024
IGI Report Number: LG628463118
Description: LABORATORY GROWN DIAMOND
Shape and Cutting Style: ROUND BRILLIANT
Measurements: 7.19 - 7.22 X 4.52 MM
GRADING RESULTS
Carat Weight: 1.45 CARAT
Color Grade: D
Clarity Grade: INTERNALLY FLAWLESS
Cut Grade: EXCELLENT

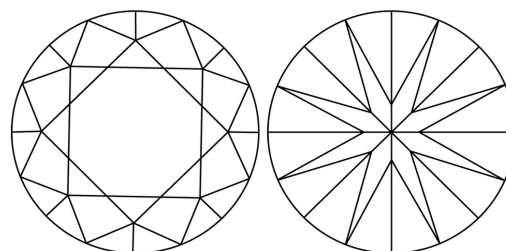
April 4, 2024
IGI Report Number: LG628463118
Description: LABORATORY GROWN DIAMOND
Shape and Cutting Style: ROUND BRILLIANT
Measurements: 7.19 - 7.22 X 4.52 MM

PROPORTIONS



Sample Image Used

CLARITY CHARACTERISTICS



KEY TO SYMBOLS

Red symbols indicate internal characteristics.
Green symbols indicate external characteristics.

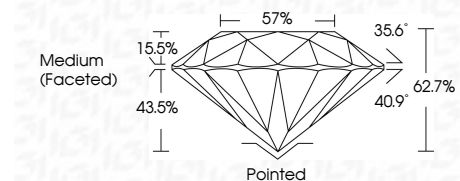
GRADING RESULTS

Carat Weight: 1.45 CARAT
Color Grade: D
Clarity Grade: INTERNALLY FLAWLESS
Cut Grade: EXCELLENT

ADDITIONAL GRADING INFORMATION

Polish: EXCELLENT
Symmetry: EXCELLENT
Fluorescence: NONE
Inscription(s): IGI LG628463118

Comments: As Grown - No indication of post-growth treatment.
This Laboratory Grown Diamond was created by High Pressure High Temperature (HPHT) growth process.
Type II



ADDITIONAL GRADING INFORMATION

Polish: EXCELLENT
Symmetry: EXCELLENT
Fluorescence: NONE
Inscription(s): IGI LG628463118
Comments: As Grown - No indication of post-growth treatment.
This Laboratory Grown Diamond was created by High Pressure High Temperature (HPHT) growth process.
Type II

COLOR

D E F G H I J Faint Very Light Light

CLARITY

IF VS 1-2 VS 1-2 SI 1-2 I 1-3
Internally Flawless Very Very Slightly Included Very Slightly Included Slightly Included Included



IGI



April 4, 2024
IGI Report No. LG628463118
ROUND BRILLIANT
1.45 CARAT
Color Grade: D
Clarity Grade: EXCELLENT
Depth: 62.7%
Table: 57%
Girdle: Medium (Faceted)
Culet: Pointed
Polish: EXCELLENT
Symmetry: EXCELLENT
Fluorescence: NONE
Inscriptions(s): IGI LG628463118
Comments: As Grown - No indication of post-growth treatment.
This Laboratory Grown Diamond was created by High Pressure High Temperature (HPHT) growth process.
Type II