



**INTERNATIONAL
GEMOLOGICAL
INSTITUTE**

ELECTRONIC COPY

LG632449421

LABORATORY GROWN DIAMOND REPORT

May 2, 2024
 IGI Report Number **LG632449421**
 Description **LABORATORY GROWN DIAMOND**
 Shape and Cutting Style **CUT CORNERED RECTANGULAR MODIFIED
BRILLIANT**
 Measurements **6.46 X 4.76 X 3.07 MM**

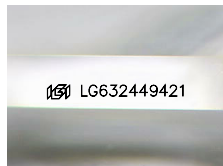
GRADING RESULTS

Carat Weight **0.85 CARAT**
 Color Grade **D**
 Clarity Grade **VVS 1**

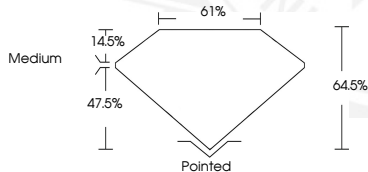
ADDITIONAL GRADING INFORMATION

Polish **EXCELLENT**
 Symmetry **EXCELLENT**
 Fluorescence **NONE**
 Inscription(s) **IGI LG632449421**

Comments: As Grown - No indication of post-growth treatment.
 This Laboratory Grown Diamond was created by High Pressure High
 Temperature (HPHT) growth process.
 Type II



Sample Image Used



May 2, 2024
IGI Report Number LG632449421
**CUT CORNERED RECTANGULAR
MODIFIED BRILLIANT**
LABORATORY GROWN DIAMOND
6.46 X 4.76 X 3.07 MM
 Carat Weight **0.85 CARAT**
 Color Grade **D**
 Clarity Grade **VVS 1**
 Polish **EXCELLENT**
 Symmetry **EXCELLENT**
 Fluorescence **NONE**
 Inscription(s) **IGI LG632449421**

Comments: As Grown - No
 indication of post-growth
 treatment. This Laboratory Grown
 Diamond was created by High
 Pressure High Temperature (HPHT)
 growth process. Type II



May 2, 2024
IGI Report Number LG632449421
**CUT CORNERED RECTANGULAR
MODIFIED BRILLIANT**
LABORATORY GROWN DIAMOND
6.46 X 4.76 X 3.07 MM
 Carat Weight **0.85 CARAT**
 Color Grade **D**
 Clarity Grade **VVS 1**
 Polish **EXCELLENT**
 Symmetry **EXCELLENT**
 Fluorescence **NONE**
 Inscription(s) **IGI LG632449421**

Comments: As Grown - No
 indication of post-growth
 treatment. This Laboratory Grown
 Diamond was created by High
 Pressure High Temperature (HPHT)
 growth process. Type II

THIS DOCUMENT WAS PRODUCED WITH THE FOLLOWING SECURITY MEASURES: SPECIAL DOCUMENT PAPER, INK SCREENS, WATERMARK, BACKGROUND DESIGNS, HOLOGRAM AND OTHER SECURITY FEATURES NOT LISTED AND DO EXCEED DOCUMENT SECURITY INDUSTRY GUIDELINES.

For terms & conditions and to verify this report, please visit www.igi.org