



# INTERNATIONAL GEMOLOGICAL INSTITUTE

ELECTRONIC COPY

LG633490351



May 8, 2024

IGI Report Number LG633490351  
ROUND BRILLIANT  
LABORATORY GROWN DIAMOND  
4.22 - 4.26 X 2.69 MM  
Carat Weight 0.30 CARAT  
Color Grade E  
Clarity Grade VS 2  
Cut Grade EXCELLENT  
Polish EXCELLENT  
Symmetry EXCELLENT  
Fluorescence NONE  
Inscription(s) IGI LG633490351

Comments: As Grown - No indication of post-growth treatment. This Laboratory Grown Diamond was created by High Pressure High Temperature (HPHT) growth process. Type II

## LABORATORY GROWN DIAMOND REPORT

May 8, 2024  
IGI Report Number LG633490351  
Description LABORATORY GROWN DIAMOND  
Shape and Cutting Style ROUND BRILLIANT  
Measurements 4.22 - 4.26 X 2.69 MM

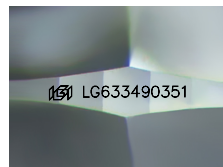
### GRADING RESULTS

Carat Weight 0.30 CARAT  
Color Grade E  
Clarity Grade VS 2  
Cut Grade EXCELLENT

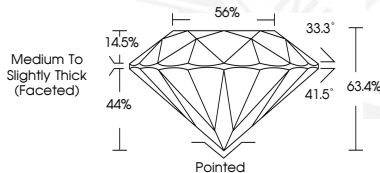
### ADDITIONAL GRADING INFORMATION

Polish EXCELLENT  
Symmetry EXCELLENT  
Fluorescence NONE  
Inscription(s) IGI LG633490351

Comments: As Grown - No indication of post-growth treatment. This Laboratory Grown Diamond was created by High Pressure High Temperature (HPHT) growth process. Type II



Sample Image Used



May 8, 2024

IGI Report Number LG633490351  
ROUND BRILLIANT  
LABORATORY GROWN DIAMOND  
4.22 - 4.26 X 2.69 MM  
Carat Weight 0.30 CARAT  
Color Grade E  
Clarity Grade VS 2  
Cut Grade EXCELLENT  
Polish EXCELLENT  
Symmetry EXCELLENT  
Fluorescence NONE  
Inscription(s) IGI LG633490351

Comments: As Grown - No indication of post-growth treatment. This Laboratory Grown Diamond was created by High Pressure High Temperature (HPHT) growth process. Type II



THIS DOCUMENT WAS PRODUCED WITH THE FOLLOWING SECURITY MEASURES: SPECIAL DOCUMENT PAPER, INK SCREENS, WATERMARK, BACKGROUND DESIGNS, HOLOGRAM AND OTHER SECURITY FEATURES NOT LISTED AND DO EXCEED DOCUMENT SECURITY INDUSTRY GUIDELINES.

For terms & conditions and to verify this report, please visit [www.igi.org](http://www.igi.org)