



**INTERNATIONAL  
GEMOLOGICAL  
INSTITUTE**

**ELECTRONIC COPY**

**LG633490368**

**LABORATORY GROWN DIAMOND REPORT**

May 8, 2024  
 IGI Report Number **LG633490368**  
 Description **LABORATORY GROWN DIAMOND**  
 Shape and Cutting Style **SQUARE CUSHION BRILLIANT**  
 Measurements **4.85 X 4.85 X 3.18 MM**

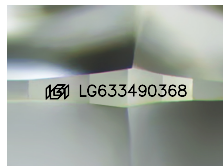
**GRADING RESULTS**

Carat Weight **0.66 CARAT**  
 Color Grade **D**  
 Clarity Grade **VS 1**

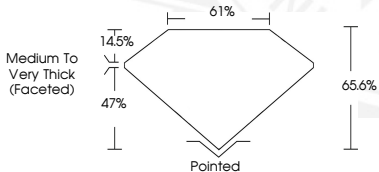
**ADDITIONAL GRADING INFORMATION**

Polish **EXCELLENT**  
 Symmetry **EXCELLENT**  
 Fluorescence **NONE**  
 Inscription(s) **IGI LG633490368**

Comments: As Grown - No indication of post-growth treatment.  
 This Laboratory Grown Diamond was created by High Pressure High Temperature (HPHT) growth process.  
 Type II



Sample Image Used



May 8, 2024  
 IGI Report Number **LG633490368**  
**SQUARE CUSHION BRILLIANT**  
**LABORATORY GROWN DIAMOND**  
**4.85 X 4.85 X 3.18 MM**  
 Carat Weight **0.66 CARAT**  
 Color Grade **D**  
 Clarity Grade **VS 1**  
 Polish **EXCELLENT**  
 Symmetry **EXCELLENT**  
 Fluorescence **NONE**  
 Inscription(s) **IGI LG633490368**

Comments: As Grown - No indication of post-growth treatment. This Laboratory Grown Diamond was created by High Pressure High Temperature (HPHT) growth process. Type II



May 8, 2024  
 IGI Report Number **LG633490368**  
**SQUARE CUSHION BRILLIANT**  
**LABORATORY GROWN DIAMOND**  
**4.85 X 4.85 X 3.18 MM**  
 Carat Weight **0.66 CARAT**  
 Color Grade **D**  
 Clarity Grade **VS 1**  
 Polish **EXCELLENT**  
 Symmetry **EXCELLENT**  
 Fluorescence **NONE**  
 Inscription(s) **IGI LG633490368**

Comments: As Grown - No indication of post-growth treatment. This Laboratory Grown Diamond was created by High Pressure High Temperature (HPHT) growth process. Type II

THIS DOCUMENT WAS PRODUCED WITH THE FOLLOWING SECURITY MEASURES: SPECIAL DOCUMENT PAPER, INK SCREENS, WATERMARK, BACKGROUND DESIGN, HOLOGRAM AND OTHER SECURITY FEATURES NOT LISTED AND DO EXCEED DOCUMENT SECURITY INDUSTRY GUIDELINES.

For terms & conditions and to verify this report, please visit [www.igi.org](http://www.igi.org)