



# INTERNATIONAL GEMOLOGICAL INSTITUTE

ELECTRONIC COPY

LG633490458

## LABORATORY GROWN DIAMOND REPORT

May 9, 2024  
IGI Report Number **LG633490458**  
Description **LABORATORY GROWN DIAMOND**  
Shape and Cutting Style **ROUND BRILLIANT**  
Measurements **4.22 - 4.26 X 2.66 MM**

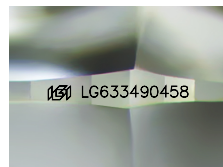
### GRADING RESULTS

Carat Weight **0.30 CARAT**  
Color Grade **D**  
Clarity Grade **SI 1**  
Cut Grade **EXCELLENT**

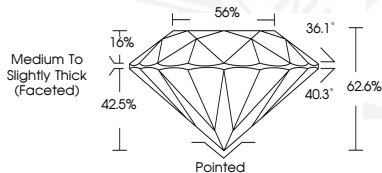
### ADDITIONAL GRADING INFORMATION

Polish **EXCELLENT**  
Symmetry **EXCELLENT**  
Fluorescence **NONE**  
Inscription(s) **IGI LG633490458**

Comments: As Grown - No indication of post-growth treatment.  
This Laboratory Grown Diamond was created by High Pressure High Temperature (HPHT) growth process.  
Type II



Sample Image Used



May 9, 2024  
IGI Report Number **LG633490458**  
**ROUND BRILLIANT**  
**LABORATORY GROWN DIAMOND**  
**4.22 - 4.26 X 2.66 MM**  
Carat Weight **0.30 CARAT**  
Color Grade **D**  
Clarity Grade **SI 1**  
Cut Grade **EXCELLENT**  
Polish **EXCELLENT**  
Symmetry **EXCELLENT**  
Fluorescence **NONE**  
Inscription(s) **IGI LG633490458**  
Comments: As Grown - No indication of post-growth treatment. This Laboratory Grown Diamond was created by High Pressure High Temperature (HPHT) growth process. Type II



May 9, 2024  
IGI Report Number **LG633490458**  
**ROUND BRILLIANT**  
**LABORATORY GROWN DIAMOND**  
**4.22 - 4.26 X 2.66 MM**  
Carat Weight **0.30 CARAT**  
Color Grade **D**  
Clarity Grade **SI 1**  
Cut Grade **EXCELLENT**  
Polish **EXCELLENT**  
Symmetry **EXCELLENT**  
Fluorescence **NONE**  
Inscription(s) **IGI LG633490458**  
Comments: As Grown - No indication of post-growth treatment. This Laboratory Grown Diamond was created by High Pressure High Temperature (HPHT) growth process. Type II



THIS DOCUMENT WAS PRODUCED WITH THE FOLLOWING SECURITY MEASURES: SPECIAL DOCUMENT PAPER, INK SCREENS, WATERMARK, BACKGROUND DESIGNS, HOLOGRAM AND OTHER SECURITY FEATURES NOT LISTED AND DO EXCEED DOCUMENT SECURITY INDUSTRY GUIDELINES.

For terms & conditions and to verify this report, please visit [www.igi.org](http://www.igi.org)