



INTERNATIONAL GEMOLOGICAL INSTITUTE

ELECTRONIC COPY

LG633490470



May 9, 2024

IGI Report Number LG633490470
ROUND BRILLIANT
LABORATORY GROWN DIAMOND
4.26 - 4.30 X 2.65 MM

Carat Weight 0.30 CARAT
Color Grade E
Clarity Grade VS 2
Cut Grade EXCELLENT
Polish VERY GOOD
Symmetry EXCELLENT
Fluorescence NONE
Inscription(s) IGI LG633490470

Comments: As Grown - No indication of post-growth treatment. This Laboratory Grown Diamond was created by High Pressure High Temperature (HPHT) growth process. Type II

LABORATORY GROWN DIAMOND REPORT

May 9, 2024
IGI Report Number LG633490470
Description LABORATORY GROWN DIAMOND
Shape and Cutting Style ROUND BRILLIANT
Measurements 4.26 - 4.30 X 2.65 MM

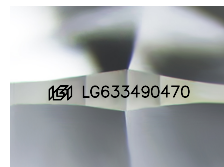
GRADING RESULTS

Carat Weight 0.30 CARAT
Color Grade E
Clarity Grade VS 2
Cut Grade EXCELLENT

ADDITIONAL GRADING INFORMATION

Polish VERY GOOD
Symmetry EXCELLENT
Fluorescence NONE
Inscription(s) IGI LG633490470

Comments: As Grown - No indication of post-growth treatment. This Laboratory Grown Diamond was created by High Pressure High Temperature (HPHT) growth process. Type II



Sample Image Used

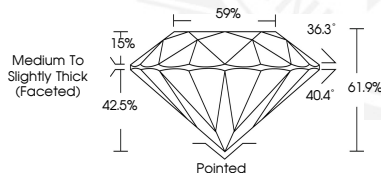


May 9, 2024

IGI Report Number LG633490470
ROUND BRILLIANT
LABORATORY GROWN DIAMOND
4.26 - 4.30 X 2.65 MM

Carat Weight 0.30 CARAT
Color Grade E
Clarity Grade VS 2
Cut Grade EXCELLENT
Polish VERY GOOD
Symmetry EXCELLENT
Fluorescence NONE
Inscription(s) IGI LG633490470

Comments: As Grown - No indication of post-growth treatment. This Laboratory Grown Diamond was created by High Pressure High Temperature (HPHT) growth process. Type II



THIS DOCUMENT WAS PRODUCED WITH THE FOLLOWING SECURITY MEASURES: SPECIAL DOCUMENT PAPER, INK SCREENS, WATERMARK, BACKGROUND DESIGNS, HOLOGRAM AND OTHER SECURITY FEATURES NOT LISTED AND DO EXCEED DOCUMENT SECURITY INDUSTRY GUIDELINES.

For terms & conditions and to verify this report, please visit www.igi.org