



**INTERNATIONAL  
GEMOLOGICAL  
INSTITUTE**

**ELECTRONIC COPY**

**LG635423846**



**May 28, 2024**

**IGI Report Number LG635423846**  
**SQUARE CUSHION BRILLIANT**  
**LABORATORY GROWN DIAMOND**  
**5.20 X 4.97 X 3.17 MM**

**Carat Weight 0.71 CARAT**  
**Color Grade D**  
**Clarity Grade VVS 2**  
**Polish EXCELLENT**  
**Symmetry EXCELLENT**  
**Fluorescence NONE**  
**Inscription(s) IGI LG635423846**

**Comments:** As Grown - No indication of post-growth treatment. This Laboratory Grown Diamond was created by High Pressure High Temperature (HPHT) growth process. Type II

**LABORATORY GROWN DIAMOND REPORT**

**May 28, 2024**  
**IGI Report Number LG635423846**  
**Description LABORATORY GROWN DIAMOND**  
**Shape and Cutting Style SQUARE CUSHION BRILLIANT**  
**Measurements 5.20 X 4.97 X 3.17 MM**

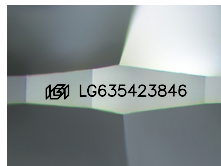
**GRADING RESULTS**

**Carat Weight 0.71 CARAT**  
**Color Grade D**  
**Clarity Grade VVS 2**

**ADDITIONAL GRADING INFORMATION**

**Polish EXCELLENT**  
**Symmetry EXCELLENT**  
**Fluorescence NONE**  
**Inscription(s) IGI LG635423846**

**Comments:** As Grown - No indication of post-growth treatment. This Laboratory Grown Diamond was created by High Pressure High Temperature (HPHT) growth process. Type II



Sample Image Used

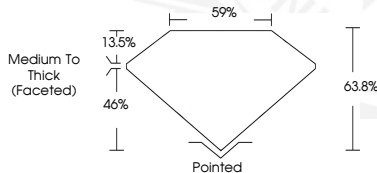


**May 28, 2024**

**IGI Report Number LG635423846**  
**SQUARE CUSHION BRILLIANT**  
**LABORATORY GROWN DIAMOND**  
**5.20 X 4.97 X 3.17 MM**

**Carat Weight 0.71 CARAT**  
**Color Grade D**  
**Clarity Grade VVS 2**  
**Polish EXCELLENT**  
**Symmetry EXCELLENT**  
**Fluorescence NONE**  
**Inscription(s) IGI LG635423846**

**Comments:** As Grown - No indication of post-growth treatment. This Laboratory Grown Diamond was created by High Pressure High Temperature (HPHT) growth process. Type II



THIS DOCUMENT WAS PRODUCED WITH THE FOLLOWING SECURITY MEASURES: SPECIAL DOCUMENT PAPER, INK SCREENS, WATERMARK, BACKGROUND DESIGN, HOLOGRAM AND OTHER SECURITY FEATURES NOT LISTED AND DO EXCEED DOCUMENT SECURITY INDUSTRY GUIDELINES.

For terms & conditions and to verify this report, please visit [www.igi.org](http://www.igi.org)