



**INTERNATIONAL
GEMOLOGICAL
INSTITUTE**

ELECTRONIC COPY

LG635427033



May 22, 2024

IGI Report Number LG635427033

EMERALD CUT

LABORATORY GROWN DIAMOND

6.19 X 4.37 X 2.94 MM

Carat Weight 0.83 CARAT

Color Grade E

Clarity Grade VVS 2

Polish EXCELLENT

Symmetry EXCELLENT

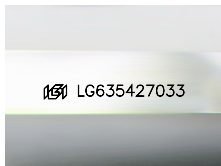
Fluorescence NONE

Inscription(s) IGI LG635427033

Comments: As Grown - No indication of post-growth treatment. This Laboratory Grown Diamond was created by High Pressure High Temperature (HPHT) growth process. Type II

LABORATORY GROWN DIAMOND REPORT

May 22, 2024
 IGI Report Number **LG635427033**
 Description **LABORATORY GROWN DIAMOND**
 Shape and Cutting Style **EMERALD CUT**
 Measurements **6.19 X 4.37 X 2.94 MM**



Sample Image Used

GRADING RESULTS

Carat Weight **0.83 CARAT**
 Color Grade **E**
 Clarity Grade **VVS 2**

ADDITIONAL GRADING INFORMATION

Polish **EXCELLENT**
 Symmetry **EXCELLENT**
 Fluorescence **NONE**
 Inscription(s) **IGI LG635427033**

Comments: As Grown - No indication of post-growth treatment. This Laboratory Grown Diamond was created by High Pressure High Temperature (HPHT) growth process. Type II



May 22, 2024

IGI Report Number LG635427033

EMERALD CUT

LABORATORY GROWN DIAMOND

6.19 X 4.37 X 2.94 MM

Carat Weight 0.83 CARAT

Color Grade E

Clarity Grade VVS 2

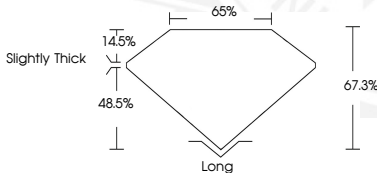
Polish EXCELLENT

Symmetry EXCELLENT

Fluorescence NONE

Inscription(s) IGI LG635427033

Comments: As Grown - No indication of post-growth treatment. This Laboratory Grown Diamond was created by High Pressure High Temperature (HPHT) growth process. Type II



THIS DOCUMENT WAS PRODUCED WITH THE FOLLOWING SECURITY MEASURES: SPECIAL DOCUMENT PAPER, INK SCREENS, WATERMARK, BACKGROUND DESIGN, HOLOGRAM AND OTHER SECURITY FEATURES NOT LISTED AND DO EXCEED DOCUMENT SECURITY INDUSTRY GUIDELINES.

For terms & conditions and to verify this report, please visit www.igi.org