



**INTERNATIONAL  
GEMOLOGICAL  
INSTITUTE**

**ELECTRONIC COPY**

**LG635427073**



**May 22, 2024**

**IGI Report Number LG635427073**

**EMERALD CUT**

**LABORATORY GROWN DIAMOND**

**6.23 X 4.35 X 2.89 MM**

**Carat Weight 0.81 CARAT**

**Color Grade D**

**Clarity Grade VS 2**

**Polish EXCELLENT**

**Symmetry EXCELLENT**

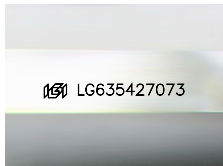
**Fluorescence NONE**

**Inscription(s) IGI LG635427073**

Comments: As Grown - No indication of post-growth treatment. This Laboratory Grown Diamond was created by High Pressure High Temperature (HPHT) growth process. Type II

**LABORATORY GROWN DIAMOND REPORT**

May 22, 2024  
 IGI Report Number **LG635427073**  
 Description **LABORATORY GROWN DIAMOND**  
 Shape and Cutting Style **EMERALD CUT**  
 Measurements **6.23 X 4.35 X 2.89 MM**



Sample Image Used

**GRADING RESULTS**

Carat Weight **0.81 CARAT**  
 Color Grade **D**  
 Clarity Grade **VS 2**

**ADDITIONAL GRADING INFORMATION**

Polish **EXCELLENT**  
 Symmetry **EXCELLENT**  
 Fluorescence **NONE**  
 Inscription(s) **IGI LG635427073**

Comments: As Grown - No indication of post-growth treatment. This Laboratory Grown Diamond was created by High Pressure High Temperature (HPHT) growth process. Type II



**May 22, 2024**

**IGI Report Number LG635427073**

**EMERALD CUT**

**LABORATORY GROWN DIAMOND**

**6.23 X 4.35 X 2.89 MM**

**Carat Weight 0.81 CARAT**

**Color Grade D**

**Clarity Grade VS 2**

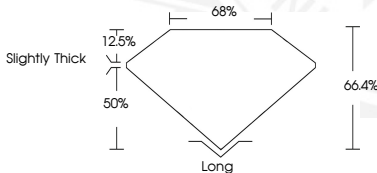
**Polish EXCELLENT**

**Symmetry EXCELLENT**

**Fluorescence NONE**

**Inscription(s) IGI LG635427073**

Comments: As Grown - No indication of post-growth treatment. This Laboratory Grown Diamond was created by High Pressure High Temperature (HPHT) growth process. Type II



THIS DOCUMENT WAS PRODUCED WITH THE FOLLOWING SECURITY MEASURES: SPECIAL DOCUMENT PAPER, INK SCREENS, WATERMARK, BACKGROUND DESIGN, HOLOGRAM AND OTHER SECURITY FEATURES NOT LISTED AND DO EXCEED DOCUMENT SECURITY INDUSTRY GUIDELINES.

For terms & conditions and to verify this report, please visit [www.igi.org](http://www.igi.org)