



**INTERNATIONAL  
GEMOLOGICAL  
INSTITUTE**

**ELECTRONIC COPY**

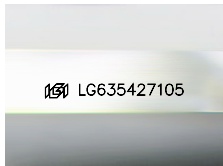
**LG635427105**



May 24, 2024  
**IGI Report Number** LG635427105  
**EMERALD CUT**  
**LABORATORY GROWN DIAMOND**  
**6.09 X 4.46 X 2.98 MM**  
**Carat Weight** 0.82 CARAT  
**Color Grade** D  
**Clarity Grade** VVS 2  
**Polish** EXCELLENT  
**Symmetry** EXCELLENT  
**Fluorescence** NONE  
**Inscription(s)** IGI LG635427105

**LABORATORY GROWN DIAMOND REPORT**

May 24, 2024  
**IGI Report Number** LG635427105  
**Description** LABORATORY GROWN DIAMOND  
**Shape and Cutting Style** EMERALD CUT  
**Measurements** 6.09 X 4.46 X 2.98 MM



Sample Image Used

**Comments:** As Grown - No indication of post-growth treatment. This Laboratory Grown Diamond was created by High Pressure High Temperature (HPHT) growth process. Type II

**GRADING RESULTS**

**Carat Weight** 0.82 CARAT  
**Color Grade** D  
**Clarity Grade** VVS 2

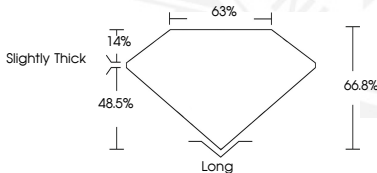
**ADDITIONAL GRADING INFORMATION**

**Polish** EXCELLENT  
**Symmetry** EXCELLENT  
**Fluorescence** NONE  
**Inscription(s)** IGI LG635427105

**Comments:** As Grown - No indication of post-growth treatment. This Laboratory Grown Diamond was created by High Pressure High Temperature (HPHT) growth process. Type II



May 24, 2024  
**IGI Report Number** LG635427105  
**EMERALD CUT**  
**LABORATORY GROWN DIAMOND**  
**6.09 X 4.46 X 2.98 MM**  
**Carat Weight** 0.82 CARAT  
**Color Grade** D  
**Clarity Grade** VVS 2  
**Polish** EXCELLENT  
**Symmetry** EXCELLENT  
**Fluorescence** NONE  
**Inscription(s)** IGI LG635427105



THIS DOCUMENT WAS PRODUCED WITH THE FOLLOWING SECURITY MEASURES: SPECIAL DOCUMENT PAPER, INK SCREENS, WATERMARK, BACKGROUND DESIGN, HOLOGRAM AND OTHER SECURITY FEATURES NOT LISTED AND DO EXCEED DOCUMENT SECURITY INDUSTRY GUIDELINES.

For terms & conditions and to verify this report, please visit [www.igi.org](http://www.igi.org)