



**INTERNATIONAL  
GEMOLOGICAL  
INSTITUTE**

**ELECTRONIC COPY**

**LG635427127**

**LABORATORY GROWN DIAMOND REPORT**

May 23, 2024  
 IGI Report Number **LG635427127**  
 Description **LABORATORY GROWN DIAMOND**  
 Shape and Cutting Style **EMERALD CUT**  
 Measurements **6.48 X 4.63 X 3.08 MM**

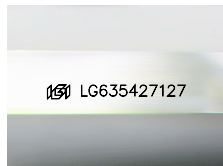
**GRADING RESULTS**

Carat Weight **0.94 CARAT**  
 Color Grade **E**  
 Clarity Grade **VS 2**

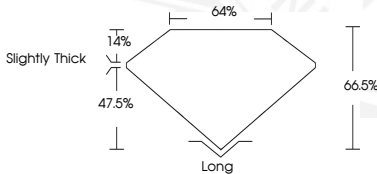
**ADDITIONAL GRADING INFORMATION**

Polish **EXCELLENT**  
 Symmetry **VERY GOOD**  
 Fluorescence **NONE**  
 Inscription(s) **IGI LG635427127**

Comments: As Grown - No indication of post-growth treatment.  
 This Laboratory Grown Diamond was created by High Pressure High Temperature (HPHT) growth process.  
 Type II



Sample Image Used



May 23, 2024  
 IGI Report Number **LG635427127**  
**EMERALD CUT**  
**LABORATORY GROWN DIAMOND**  
**6.48 X 4.63 X 3.08 MM**  
 Carat Weight **0.94 CARAT**  
 Color Grade **E**  
 Clarity Grade **VS 2**  
 Polish **EXCELLENT**  
 Symmetry **VERY GOOD**  
 Fluorescence **NONE**  
 Inscription(s) **IGI LG635427127**

Comments: As Grown - No indication of post-growth treatment. This Laboratory Grown Diamond was created by High Pressure High Temperature (HPHT) growth process. Type II



May 23, 2024  
 IGI Report Number **LG635427127**  
**EMERALD CUT**  
**LABORATORY GROWN DIAMOND**  
**6.48 X 4.63 X 3.08 MM**  
 Carat Weight **0.94 CARAT**  
 Color Grade **E**  
 Clarity Grade **VS 2**  
 Polish **EXCELLENT**  
 Symmetry **VERY GOOD**  
 Fluorescence **NONE**  
 Inscription(s) **IGI LG635427127**

Comments: As Grown - No indication of post-growth treatment. This Laboratory Grown Diamond was created by High Pressure High Temperature (HPHT) growth process. Type II

THIS DOCUMENT WAS PRODUCED WITH THE FOLLOWING SECURITY MEASURES: SPECIAL DOCUMENT PAPER, INK SCREENS, WATERMARK, BACKGROUND DESIGN, HOLOGRAM AND OTHER SECURITY FEATURES NOT LISTED AND DO EXCEED DOCUMENT SECURITY INDUSTRY GUIDELINES.

For terms & conditions and to verify this report, please visit [www.igi.org](http://www.igi.org)