



**INTERNATIONAL  
GEMOLOGICAL  
INSTITUTE**

**LABORATORY GROWN DIAMOND REPORT**

June 17, 2024  
 IGI Report Number **LG639413195**  
 Description **LABORATORY GROWN DIAMOND**  
 Shape and Cutting Style **ROUND BRILLIANT**  
 Measurements **5.68 - 5.71 X 3.58 MM**

**GRADING RESULTS**

Carat Weight **0.72 CARAT**  
 Color Grade **E**  
 Clarity Grade **VVS 2**  
 Cut Grade **EXCELLENT**

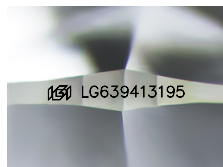
**ADDITIONAL GRADING INFORMATION**

Polish **EXCELLENT**  
 Symmetry **EXCELLENT**  
 Fluorescence **NONE**  
 Inscription(s) **IGI LG639413195**

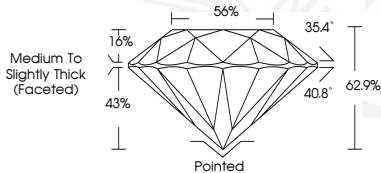
Comments: As Grown - No indication of post-growth treatment. This Laboratory Grown Diamond was created by High Pressure High Temperature (HPHT) growth process. Type II

**ELECTRONIC COPY**

**LG639413195**



Sample Image Used



June 17, 2024  
 IGI Report Number **LG639413195**  
 ROUND BRILLIANT  
 LABORATORY GROWN DIAMOND  
**5.68 - 5.71 X 3.58 MM**  
 Carat Weight **0.72 CARAT**  
 Color Grade **E**  
 Clarity Grade **VVS 2**  
 Cut Grade **EXCELLENT**  
 Polish **EXCELLENT**  
 Symmetry **EXCELLENT**  
 Fluorescence **NONE**  
 Inscription(s) **IGI LG639413195**

Comments: As Grown - No indication of post-growth treatment. This Laboratory Grown Diamond was created by High Pressure High Temperature (HPHT) growth process. Type II



June 17, 2024  
 IGI Report Number **LG639413195**  
 ROUND BRILLIANT  
 LABORATORY GROWN DIAMOND  
**5.68 - 5.71 X 3.58 MM**  
 Carat Weight **0.72 CARAT**  
 Color Grade **E**  
 Clarity Grade **VVS 2**  
 Cut Grade **EXCELLENT**  
 Polish **EXCELLENT**  
 Symmetry **EXCELLENT**  
 Fluorescence **NONE**  
 Inscription(s) **IGI LG639413195**

Comments: As Grown - No indication of post-growth treatment. This Laboratory Grown Diamond was created by High Pressure High Temperature (HPHT) growth process. Type II

THIS DOCUMENT WAS PRODUCED WITH THE FOLLOWING SECURITY MEASURES: SPECIAL DOCUMENT PAPER, INK SCREENS, WATERMARK, BACKGROUND DESIGN, HOLOGRAM AND OTHER SECURITY FEATURES NOT LISTED AND DO EXCEED DOCUMENT SECURITY INDUSTRY GUIDELINES.

For terms & conditions and to verify this report, please visit [www.igi.org](http://www.igi.org)