



**INTERNATIONAL  
GEMOLOGICAL  
INSTITUTE**

**LABORATORY GROWN DIAMOND REPORT**

June 26, 2024  
 IGI Report Number **LG640419094**  
 Description **LABORATORY GROWN DIAMOND**  
 Shape and Cutting Style **ROUND BRILLIANT**  
 Measurements **5.06 - 5.11 X 3.18 MM**

**GRADING RESULTS**

Carat Weight **0.51 CARAT**  
 Color Grade **E**  
 Clarity Grade **VS 2**  
 Cut Grade **IDEAL**

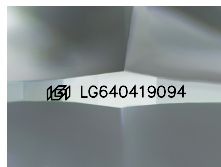
**ADDITIONAL GRADING INFORMATION**

Polish **VERY GOOD**  
 Symmetry **EXCELLENT**  
 Fluorescence **NONE**  
 Inscription(s) **IGI LG640419094**

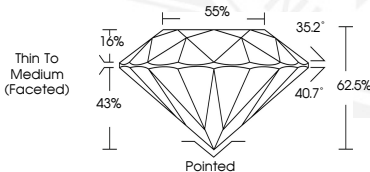
Comments: As Grown - No indication of post-growth treatment. This Laboratory Grown Diamond was created by High Pressure High Temperature (HPHT) growth process. Type II

**ELECTRONIC COPY**

**LG640419094**



Sample Image Used



June 26, 2024  
 IGI Report Number **LG640419094**  
 ROUND BRILLIANT  
 LABORATORY GROWN DIAMOND  
**5.06 - 5.11 X 3.18 MM**  
 Carat Weight **0.51 CARAT**  
 Color Grade **E**  
 Clarity Grade **VS 2**  
 Cut Grade **IDEAL**  
 Polish **VERY GOOD**  
 Symmetry **EXCELLENT**  
 Fluorescence **NONE**  
 Inscription(s) **IGI LG640419094**  
 Comments: As Grown - No indication of post-growth treatment. This Laboratory Grown Diamond was created by High Pressure High Temperature (HPHT) growth process. Type II



June 26, 2024  
 IGI Report Number **LG640419094**  
 ROUND BRILLIANT  
 LABORATORY GROWN DIAMOND  
**5.06 - 5.11 X 3.18 MM**  
 Carat Weight **0.51 CARAT**  
 Color Grade **E**  
 Clarity Grade **VS 2**  
 Cut Grade **IDEAL**  
 Polish **VERY GOOD**  
 Symmetry **EXCELLENT**  
 Fluorescence **NONE**  
 Inscription(s) **IGI LG640419094**  
 Comments: As Grown - No indication of post-growth treatment. This Laboratory Grown Diamond was created by High Pressure High Temperature (HPHT) growth process. Type II

THIS DOCUMENT WAS PRODUCED WITH THE FOLLOWING SECURITY MEASURES: SPECIAL DOCUMENT PAPER, INK SCREENS, WATERMARK, BACKGROUND DESIGNS, HOLOGRAM AND OTHER SECURITY FEATURES NOT LISTED AND DO EXCEED DOCUMENT SECURITY INDUSTRY GUIDELINES.

For terms & conditions and to verify this report, please visit [www.igi.org](http://www.igi.org)