



**INTERNATIONAL  
GEMOLOGICAL  
INSTITUTE**

**LABORATORY GROWN DIAMOND REPORT**

July 8, 2024  
 IGI Report Number **LG642447731**  
 Description **LABORATORY GROWN DIAMOND**  
 Shape and Cutting Style **ROUND BRILLIANT**  
 Measurements **4.26 - 4.32 X 2.71 MM**

**GRADING RESULTS**

Carat Weight **0.31 CARAT**  
 Color Grade **D**  
 Clarity Grade **VS 1**  
 Cut Grade **EXCELLENT**

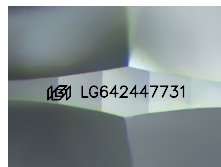
**ADDITIONAL GRADING INFORMATION**

Polish **EXCELLENT**  
 Symmetry **EXCELLENT**  
 Fluorescence **NONE**  
 Inscription(s) **IGI LG642447731**

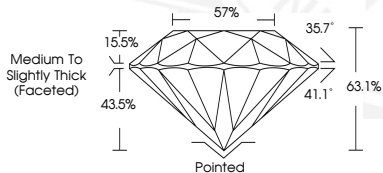
Comments: As Grown - No indication of post-growth treatment. This Laboratory Grown Diamond was created by High Pressure High Temperature (HPHT) growth process. Type II

**ELECTRONIC COPY**

**LG642447731**



Sample Image Used



July 8, 2024  
 IGI Report Number **LG642447731**  
 ROUND BRILLIANT  
 LABORATORY GROWN DIAMOND  
 4.26 - 4.32 X 2.71 MM  
 Carat Weight **0.31 CARAT**  
 Color Grade **D**  
 Clarity Grade **VS 1**  
 Cut Grade **EXCELLENT**  
 Polish **EXCELLENT**  
 Symmetry **EXCELLENT**  
 Fluorescence **NONE**  
 Inscription(s) **IGI LG642447731**

Comments: As Grown - No indication of post-growth treatment. This Laboratory Grown Diamond was created by High Pressure High Temperature (HPHT) growth process. Type II



July 8, 2024  
 IGI Report Number **LG642447731**  
 ROUND BRILLIANT  
 LABORATORY GROWN DIAMOND  
 4.26 - 4.32 X 2.71 MM  
 Carat Weight **0.31 CARAT**  
 Color Grade **D**  
 Clarity Grade **VS 1**  
 Cut Grade **EXCELLENT**  
 Polish **EXCELLENT**  
 Symmetry **EXCELLENT**  
 Fluorescence **NONE**  
 Inscription(s) **IGI LG642447731**

Comments: As Grown - No indication of post-growth treatment. This Laboratory Grown Diamond was created by High Pressure High Temperature (HPHT) growth process. Type II

THIS DOCUMENT WAS PRODUCED WITH THE FOLLOWING SECURITY MEASURES: SPECIAL DOCUMENT PAPER, INK SCREENS, WATERMARK, BACKGROUND DESIGN, HOLOGRAM AND OTHER SECURITY FEATURES NOT LISTED AND DO EXCEED DOCUMENT SECURITY INDUSTRY GUIDELINES.

For terms & conditions and to verify this report, please visit [www.igi.org](http://www.igi.org)