



ELECTRONIC COPY

LG642460630
Report verification at igi.org



July 9, 2024
IGI Report Number LG642460630
Description LABORATORY GROWN DIAMOND
Shape and Cutting Style ROUND BRILLIANT
Measurements 10.35 - 10.40 X 6.30 MM
GRADING RESULTS
Carat Weight 4.25 CARATS
Color Grade F
Clarity Grade VS 1
Cut Grade IDEAL

July 9, 2024
IGI Report Number LG642460630
Description LABORATORY GROWN DIAMOND
Shape and Cutting Style ROUND BRILLIANT
Measurements 10.35 - 10.40 X 6.30 MM

GRADING RESULTS

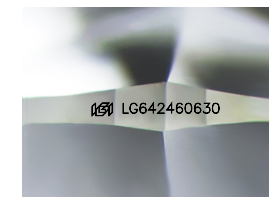
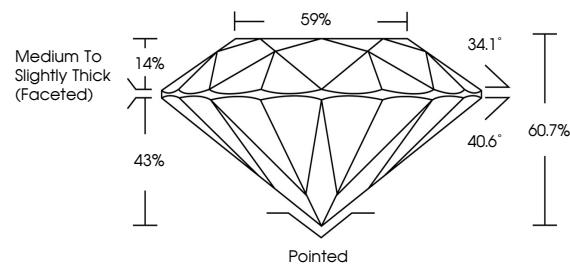
Carat Weight 4.25 CARATS
Color Grade F
Clarity Grade VS 1
Cut Grade IDEAL

ADDITIONAL GRADING INFORMATION

Polish EXCELLENT
Symmetry EXCELLENT
Fluorescence NONE
Inscription(s) IGI LG642460630

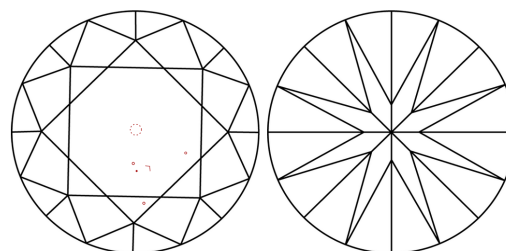
Comments: This Laboratory Grown Diamond was created by Chemical Vapor Deposition (CVD) growth process. Type IIa

PROPORTIONS



Sample Image Used

CLARITY CHARACTERISTICS



KEY TO SYMBOLS

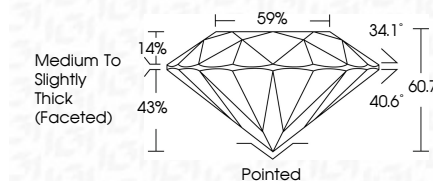
Red symbols indicate internal characteristics.
Green symbols indicate external characteristics.

COLOR

D E F G H I J Faint Very Light Light

CLARITY

IF VS 1-2 VS 1-2 SI 1-2 I 1-3
Internally Flawless Very Very Slightly Included Very Slightly Included Slightly Included Included



ADDITIONAL GRADING INFORMATION

Polish EXCELLENT
Symmetry EXCELLENT
Fluorescence NONE
Inscription(s) IGI LG642460630
Comments: This Laboratory Grown Diamond was created by Chemical Vapor Deposition (CVD) growth process. Type IIa



July 9, 2024
IGI Report No LG642460630
ROUND BRILLIANT
10.35 - 10.40 X 6.30 MM
4.25 CARATS F
Color Grade VS 1 IDEAL
Clarity Grade VS 1 IDEAL
Depth 60.7%
Table 59%
Girdle Medium To Slightly Thick (Faceted)
Culet Pointed
Polish EXCELLENT
Symmetry EXCELLENT
Fluorescence NONE
Inscription(s) IGI LG642460630
Comments: This Laboratory Grown Diamond was created by Chemical Vapor Deposition (CVD) growth process. Type IIa