



ELECTRONIC COPY

LG646458025
Report verification at igi.org



August 6, 2024

IGI Report Number **LG646458025**

Description **LABORATORY GROWN DIAMOND**

Shape and Cutting Style **PRINCESS CUT**

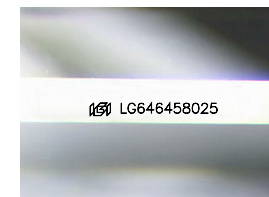
Measurements **6.05 X 5.96 X 4.33 MM**

GRADING RESULTS

Carat Weight **1.41 CARAT**

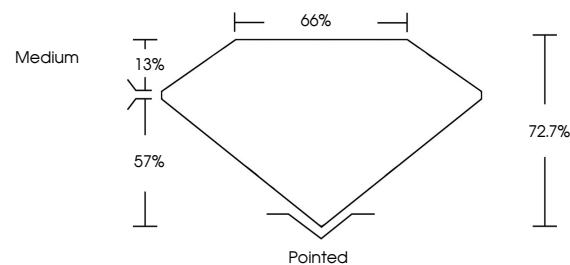
Color Grade **D**

Clarity Grade **VS 1**

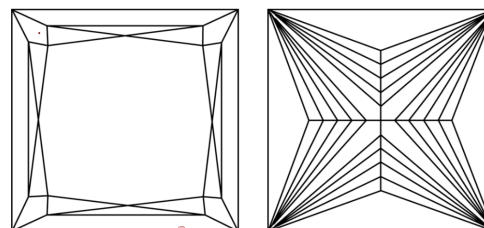


Sample Image Used

PROPORTIONS



CLARITY CHARACTERISTICS



KEY TO SYMBOLS

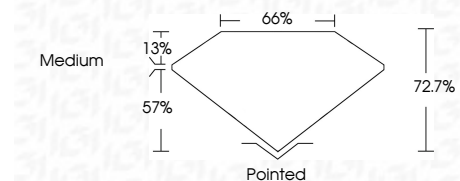
Red symbols indicate internal characteristics.
Green symbols indicate external characteristics.

COLOR

D E F G H I J Faint Very Light Light

CLARITY

IF	VS ¹⁻²	VS ¹⁻²	SI ¹⁻²	I ¹⁻³
Internally Flawless	Very Very Slightly Included	Very Slightly Included	Slightly Included	Included



ADDITIONAL GRADING INFORMATION

Polish **EXCELLENT**

Symmetry **EXCELLENT**

Fluorescence **NONE**

Inscription(s) **IGI LG646458025**

Comments: This Laboratory Grown Diamond was created by Chemical Vapor Deposition (CVD) growth process.
Type IIa



IGI



August 6, 2024
IGI Report No. LG646458025
PRINCESS CUT

1.41 CARAT
D

6.05 X 5.96 X 4.33 MM
Color Grade
Clarity Grade
Depth
Table
Girdle
Medium

Pointed
Polish
Symmetry
Fluorescence
Inscription(s)

EXCELLENT
EXCELLENT
NONE
IGI LG646458025

Comments: This Laboratory Grown Diamond was created by Chemical Vapor Deposition (CVD) growth process.
Type IIa