



**ELECTRONIC COPY**

LG648487510  
Report verification at igi.org



August 22, 2024  
IGI Report Number **LG648487510**  
Description **LABORATORY GROWN DIAMOND**  
Shape and Cutting Style **CUT CORNERED  
RECTANGULAR MODIFIED  
BRILLIANT**  
Measurements **9.37 X 7.15 X 4.77 MM**  
**GRADING RESULTS**  
Carat Weight **3.01 CARATS**  
Color Grade **FANCY VIVID BLUE**  
Clarity Grade **VS 1**

**LABORATORY GROWN DIAMOND REPORT**

August 22, 2024  
IGI Report Number **LG648487510**  
Description **LABORATORY GROWN DIAMOND**  
Shape and Cutting Style **CUT CORNERED RECTANGULAR  
MODIFIED BRILLIANT**  
Measurements **9.37 X 7.15 X 4.77 MM**

**GRADING RESULTS**

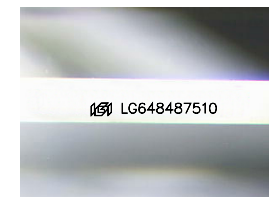
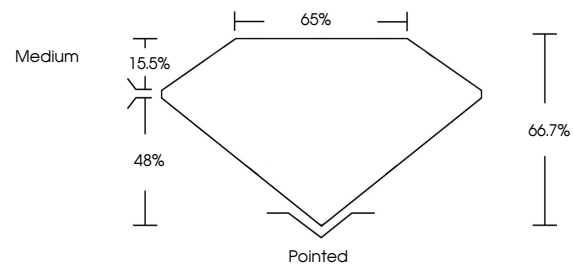
Carat Weight **3.01 CARATS**  
Color Grade **FANCY VIVID BLUE**  
Clarity Grade **VS 1**

**ADDITIONAL GRADING INFORMATION**

Polish **EXCELLENT**  
Symmetry **EXCELLENT**  
Fluorescence **NONE**  
Inscription(s) **IGI LG648487510**

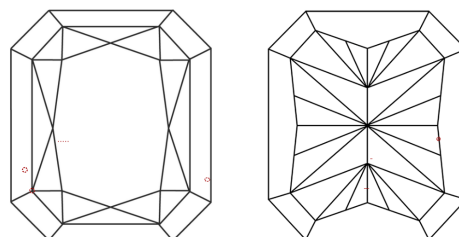
Comments: This Laboratory Grown Diamond was created by Chemical Vapor Deposition (CVD) growth process. Indications of post-growth treatment.

**PROPORTIONS**



Sample Image Used

**CLARITY CHARACTERISTICS**



**KEY TO SYMBOLS**

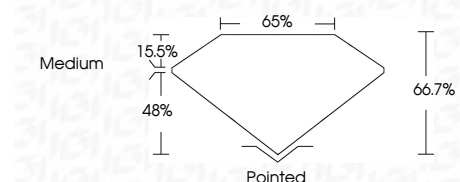
Red symbols indicate internal characteristics.  
Green symbols indicate external characteristics.

**COLOR**

D E F G H I J Faint Very Light Light

**CLARITY**

IF	VS <sup>1-2</sup>	VS <sup>1-2</sup>	SI <sup>1-2</sup>	I <sup>1-3</sup>
Internally Flawless	Very Very Slightly Included	Very Slightly Included	Slightly Included	Included



**ADDITIONAL GRADING INFORMATION**

Polish **EXCELLENT**  
Symmetry **EXCELLENT**  
Fluorescence **NONE**  
Inscription(s) **IGI LG648487510**  
Comments: This Laboratory Grown Diamond was created by Chemical Vapor Deposition (CVD) growth process. Indications of post-growth treatment.



August 22, 2024  
IGI Report No **LG648487510**  
**CUT CORNERED RECT. MODIFIED BRILLIANT**  
**9.37 X 7.15 X 4.77 MM**  
Carat Weight **3.01 CARATS**  
Color Grade **FANCY VIVID BLUE**  
Clarity Grade **VS 1**  
Depth **48%**  
Table **15.5%**  
Girdle **Medium**  
Culet **Pointed**  
Polish **EXCELLENT**  
Symmetry **EXCELLENT**  
Fluorescence **NONE**  
Inscription(s) **IGI LG648487510**  
Comments: This Laboratory Grown Diamond was created by Chemical Vapor Deposition (CVD) growth process. Indications of post-growth treatment.