



**ELECTRONIC COPY**

LG649409476  
Report verification at igi.org



August 27, 2024  
IGI Report Number **LG649409476**

Description **LABORATORY GROWN DIAMOND**

Shape and Cutting Style **CUSHION BRILLIANT**

Measurements **10.42 X 7.51 X 4.89 MM**

**GRADING RESULTS**

Carat Weight **3.20 CARATS**

Color Grade **FANCY VIVID BLUE**

Clarity Grade **VS 1**

August 27, 2024  
IGI Report Number **LG649409476**  
Description **LABORATORY GROWN DIAMOND**  
Shape and Cutting Style **CUSHION BRILLIANT**  
Measurements **10.42 X 7.51 X 4.89 MM**

**GRADING RESULTS**

Carat Weight **3.20 CARATS**

Color Grade **FANCY VIVID BLUE**

Clarity Grade **VS 1**

**ADDITIONAL GRADING INFORMATION**

Polish **EXCELLENT**

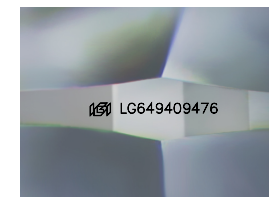
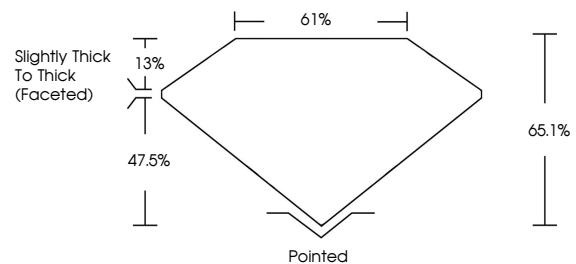
Symmetry **EXCELLENT**

Fluorescence **NONE**

Inscription(s) **IGI LG649409476**

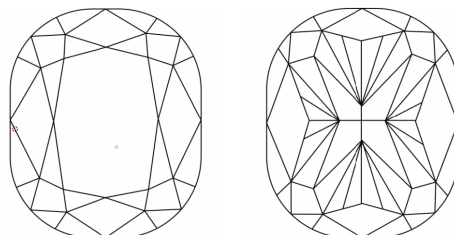
Comments: This Laboratory Grown Diamond was created by Chemical Vapor Deposition (CVD) growth process.  
Indications of post-growth treatment.

**PROPORTIONS**



Sample Image Used

**CLARITY CHARACTERISTICS**



**KEY TO SYMBOLS**

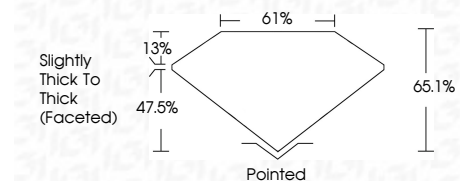
Red symbols indicate internal characteristics.  
Green symbols indicate external characteristics.

**COLOR**

D E F G H I J Faint Very Light Light

**CLARITY**

IF	VS <sup>1-2</sup>	VS <sup>1-2</sup>	SI <sup>1-2</sup>	I <sup>1-3</sup>
Internally Flawless	Very Very Slightly Included	Very Slightly Included	Slightly Included	Included



**ADDITIONAL GRADING INFORMATION**

Polish **EXCELLENT**

Symmetry **EXCELLENT**

Fluorescence **NONE**

Inscription(s) **IGI LG649409476**

Comments: This Laboratory Grown Diamond was created by Chemical Vapor Deposition (CVD) growth process.  
Indications of post-growth treatment.



**IGI**



August 27, 2024	3.20 CARATS
IGI Report No LG649409476	FANCY VIVID BLUE
CUSHION BRILLIANT	VS 1
10.42 X 7.51 X 4.89 MM	65.1%
Carat Weight	61%
Color Grade	Slightly Thick To Thick (Faceted)
Clarity Grade	Pointed
Depth	EXCELLENT
Table	EXCELLENT
Grailes	NONE
Culet	IGI LG649409476
Polish	
Symmetry	
Fluorescence	
Inscription(s)	

Comments: This Laboratory Grown Diamond was created by Chemical Vapor Deposition (CVD) growth process.  
Indications of post-growth treatment.