



**ELECTRONIC COPY**

LG651466270  
Report verification at igi.org



September 10, 2024

IGI Report Number **LG651466270**

Description **LABORATORY GROWN DIAMOND**

Shape and Cutting Style **PRINCESS CUT**

Measurements **5.45 X 5.43 X 3.92 MM**

**GRADING RESULTS**

Carat Weight **1.00 CARAT**

Color Grade **E**

Clarity Grade **VVS 1**

September 10, 2024  
IGI Report Number **LG651466270**  
Description **LABORATORY GROWN DIAMOND**  
Shape and Cutting Style **PRINCESS CUT**  
Measurements **5.45 X 5.43 X 3.92 MM**

**GRADING RESULTS**

Carat Weight **1.00 CARAT**

Color Grade **E**

Clarity Grade **VVS 1**

**ADDITIONAL GRADING INFORMATION**

Polish **EXCELLENT**

Symmetry **EXCELLENT**

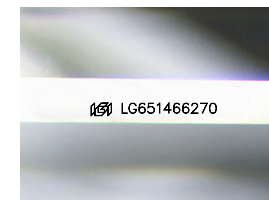
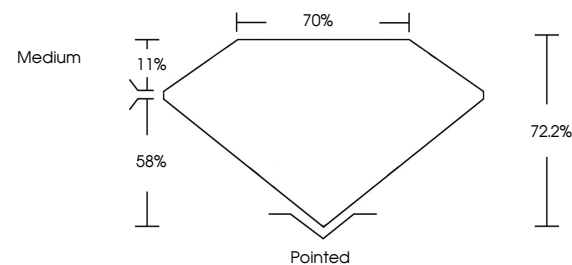
Fluorescence **NONE**

Inscription(s) **IGI LG651466270**

Comments: As Grown - No indication of post-growth treatment.

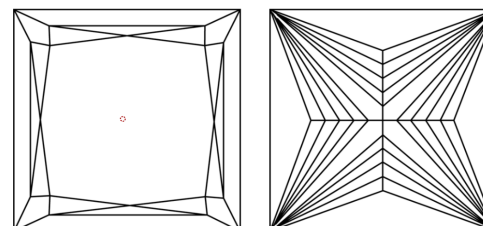
This Laboratory Grown Diamond was created by High Pressure High Temperature (HPHT) growth process. Type II

**PROPORTIONS**



Sample Image Used

**CLARITY CHARACTERISTICS**



**KEY TO SYMBOLS**

Red symbols indicate internal characteristics.  
Green symbols indicate external characteristics.

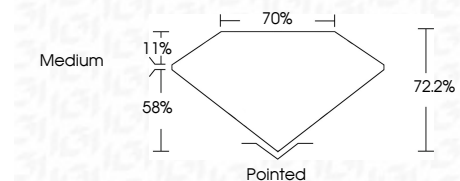
**COLOR**

D E F G H I J Faint Very Light Light

**CLARITY**

IF VS<sup>1-2</sup> VS<sup>1-2</sup> SI<sup>1-2</sup> I<sup>1-3</sup>

Internally Flawless Very Very Slightly Included Very Slightly Included Slightly Included Included



**ADDITIONAL GRADING INFORMATION**

Polish **EXCELLENT**

Symmetry **EXCELLENT**

Fluorescence **NONE**

Inscription(s) **IGI LG651466270**

Comments: As Grown - No indication of post-growth treatment.

This Laboratory Grown Diamond was created by High Pressure High Temperature (HPHT) growth process. Type II



**IGI**



September 10, 2024	1.00 CARAT	E	VVS 1	72.2%	70%	Medium	Pointed
IGI Report No LG651466270	5.45 X 5.43 X 3.92 MM	PRINCESS CUT	EXCELLENT	EXCELLENT	NONE	IGI LG651466270	
Carat Weight	Color Grade	Clarity Grade	Table	Grailes	Culet	Polish	Symmetry
Fluorescence	Inscription(s)	Comments: As Grown - No indication of post-growth treatment. This Laboratory Grown Diamond was created by High Pressure High Temperature (HPHT) growth process. Type II					