



ELECTRONIC COPY

LG651466450
Report verification at igi.org



September 11, 2024

IGI Report Number **LG651466450**

Description **LABORATORY GROWN DIAMOND**

Shape and Cutting Style **ROUND BRILLIANT**

Measurements **9.36 - 9.41 X 5.65 MM**

GRADING RESULTS

Carat Weight **3.03 CARATS**

Color Grade **FANCY LIGHT PINK**

Clarity Grade **VVS 2**

Cut Grade **IDEAL**

September 11, 2024
IGI Report Number **LG651466450**
Description **LABORATORY GROWN DIAMOND**
Shape and Cutting Style **ROUND BRILLIANT**
Measurements **9.36 - 9.41 X 5.65 MM**

GRADING RESULTS

Carat Weight **3.03 CARATS**

Color Grade **FANCY LIGHT PINK**

Clarity Grade **VVS 2**

Cut Grade **IDEAL**

ADDITIONAL GRADING INFORMATION

Polish **EXCELLENT**

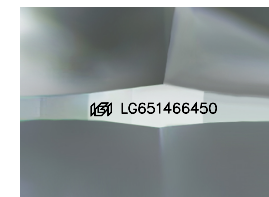
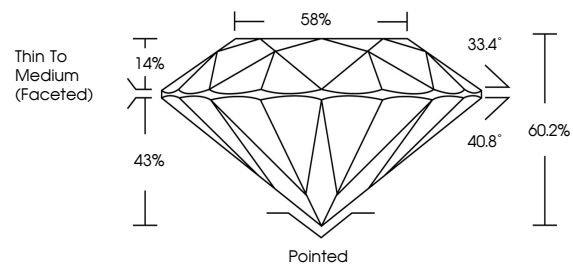
Symmetry **EXCELLENT**

Fluorescence **SLIGHT**

Inscription(s) **LG651466450**

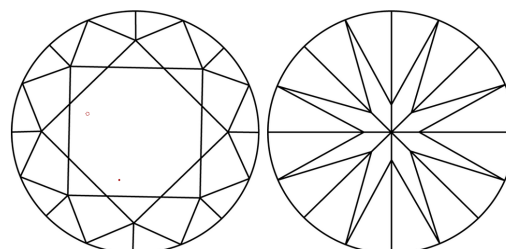
Comments: This Laboratory Grown Diamond was created by Chemical Vapor Deposition (CVD) growth process.
Indications of post-growth treatment.

PROPORTIONS



Sample Image Used

CLARITY CHARACTERISTICS



KEY TO SYMBOLS

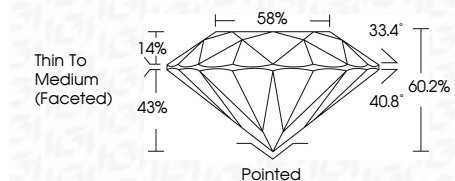
Red symbols indicate internal characteristics.
Green symbols indicate external characteristics.

COLOR

D E F G H I J Faint Very Light Light

CLARITY

IF	VS ¹⁻²	VS ¹⁻²	SI ¹⁻²	I ¹⁻³
Internally Flawless	Very Very Slightly Included	Very Slightly Included	Slightly Included	Included



ADDITIONAL GRADING INFORMATION

Polish **EXCELLENT**

Symmetry **EXCELLENT**

Fluorescence **SLIGHT**

Inscription(s) **LG651466450**

Comments: This Laboratory Grown Diamond was created by Chemical Vapor Deposition (CVD) growth process.
Indications of post-growth treatment.



September 11, 2024
IGI Report No LG651466450
ROUND BRILLIANT

3.03 CARATS
Carat Weight
FANCY LIGHT PINK
Color Grade
VVS 2
Clarity Grade
IDEAL
Depth
60.2%
Table
58%
Thin To Medium (Faceted)
Girdle

Pointed
Polish
EXCELLENT
Symmetry
EXCELLENT
Fluorescence
SLIGHT
Inscription(s)
 LG651466450

Comments: This Laboratory Grown Diamond was created by Chemical Vapor Deposition (CVD) growth process.
Indications of post-growth treatment.