



**ELECTRONIC COPY**

LG651495384  
Report verification at igi.org



September 11, 2024

IGI Report Number **LG651495384**

Description **LABORATORY GROWN DIAMOND**

Shape and Cutting Style **ROUND BRILLIANT**

Measurements **6.51 - 6.53 X 3.95 MM**

**GRADING RESULTS**

Carat Weight **1.02 CARAT**

Color Grade **D**

Clarity Grade **VVS 2**

Cut Grade **IDEAL**

September 11, 2024  
IGI Report Number **LG651495384**  
Description **LABORATORY GROWN DIAMOND**  
Shape and Cutting Style **ROUND BRILLIANT**  
Measurements **6.51 - 6.53 X 3.95 MM**

**GRADING RESULTS**

Carat Weight **1.02 CARAT**

Color Grade **D**

Clarity Grade **VVS 2**

Cut Grade **IDEAL**

**ADDITIONAL GRADING INFORMATION**

Polish **EXCELLENT**

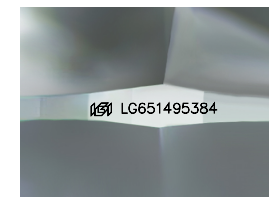
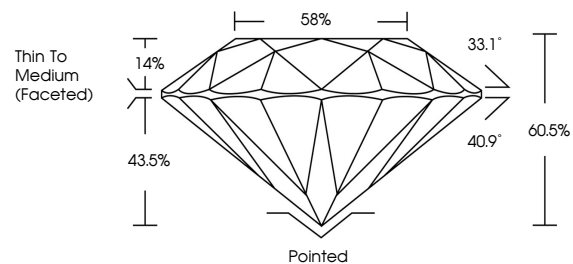
Symmetry **EXCELLENT**

Fluorescence **NONE**

Inscription(s) **LG651495384**

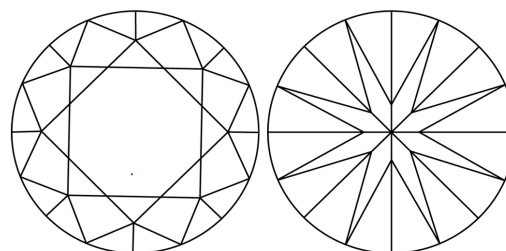
Comments: This Laboratory Grown Diamond was created by Chemical Vapor Deposition (CVD) growth process. Type IIa

**PROPORTIONS**



Sample Image Used

**CLARITY CHARACTERISTICS**



**KEY TO SYMBOLS**

Red symbols indicate internal characteristics.  
Green symbols indicate external characteristics.

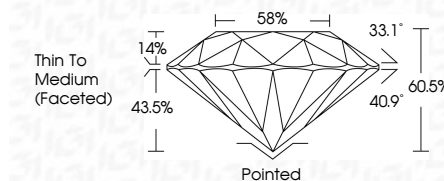
**COLOR**

D E F G H I J Faint Very Light Light

**CLARITY**

IF VS<sup>1-2</sup> VS<sup>1-2</sup> SI<sup>1-2</sup> I<sup>1-3</sup>

Internally Flawless Very Very Slightly Included Very Slightly Included Slightly Included Included



**ADDITIONAL GRADING INFORMATION**

Polish **EXCELLENT**

Symmetry **EXCELLENT**

Fluorescence **NONE**

Inscription(s) **LG651495384**

Comments: This Laboratory Grown Diamond was created by Chemical Vapor Deposition (CVD) growth process. Type IIa



**IGI**



September 11, 2024	1.02 CARAT	D	Pointed
IGI Report No LG651495384	VVS 2	IDEAL	EXCELLENT
ROUND BRILLIANT	60.5%	EXCELLENT	EXCELLENT
6.51 - 6.53 X 3.95 MM	88%	NONE	NONE
Color Grade	Thin To Medium (Faceted)	None	IGI LG651495384
Clarity Grade	Cut	None	
Depth	Polish	None	
Table	Symmetry	None	
Girdle	Fluorescence	None	
	Inscriptions(s)		

Comments: This Laboratory Grown Diamond was created by Chemical Vapor Deposition (CVD) growth process. Type IIa