



**ELECTRONIC COPY**

LG651495388  
Report verification at [igi.org](http://igi.org)



September 11, 2024

IGI Report Number **LG651495388**

Description **LABORATORY GROWN DIAMOND**

Shape and Cutting Style **ROUND BRILLIANT**

Measurements **6.50 - 6.52 X 3.94 MM**

**GRADING RESULTS**

Carat Weight **1.02 CARAT**

Color Grade **D**

Clarity Grade **VVS 2**

Cut Grade **IDEAL**

September 11, 2024  
IGI Report Number **LG651495388**  
Description **LABORATORY GROWN DIAMOND**  
Shape and Cutting Style **ROUND BRILLIANT**  
Measurements **6.50 - 6.52 X 3.94 MM**

**GRADING RESULTS**

Carat Weight **1.02 CARAT**

Color Grade **D**

Clarity Grade **VVS 2**

Cut Grade **IDEAL**

**ADDITIONAL GRADING INFORMATION**

Polish **EXCELLENT**

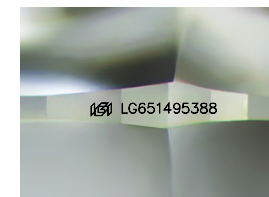
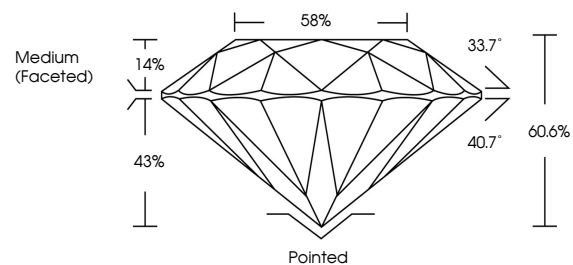
Symmetry **EXCELLENT**

Fluorescence **NONE**

Inscription(s) **LG651495388**

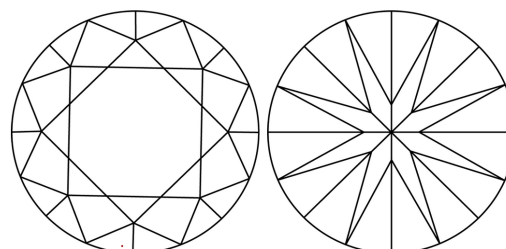
Comments: This Laboratory Grown Diamond was created by Chemical Vapor Deposition (CVD) growth process.  
Type IIa

**PROPORTIONS**



Sample Image Used

**CLARITY CHARACTERISTICS**



**KEY TO SYMBOLS**

Red symbols indicate internal characteristics.  
Green symbols indicate external characteristics.

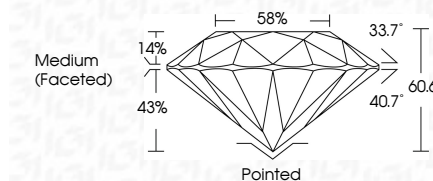
**COLOR**

D E F G H I J Faint Very Light Light

**CLARITY**

IF VS<sup>1-2</sup> VS<sup>1-2</sup> SI<sup>1-2</sup> I<sup>1-3</sup>

Internally Flawless Very Very Slightly Included Very Slightly Included Slightly Included Included



**ADDITIONAL GRADING INFORMATION**

Polish **EXCELLENT**

Symmetry **EXCELLENT**

Fluorescence **NONE**

Inscription(s) **LG651495388**

Comments: This Laboratory Grown Diamond was created by Chemical Vapor Deposition (CVD) growth process.  
Type IIa



**IGI**



|  |                  |       |           |
|--|------------------|-------|-----------|
| September 11, 2024   | 1.02 CARAT       | D     | Pointed   |
| IGI Report No LG651495388  | EXCELLENT        | VVS 2 | EXCELLENT |
| ROUND BRILLIANT  | EXCELLENT        | IDEAL | EXCELLENT |
| 6.50 - 6.52 X 3.94 MM  | 60.0%            | 60.0% | NONE      |
| Carat Weight   | Medium (Faceted) | 88%   | None      |
| Color Grade  |                  |       |           |
| Clarity Grade  |                  |       |           |
| Cut Grade  |                  |       |           |
| Depth  |                  |       |           |
| Table  |                  |       |           |
| Girdle   |                  |       |           |
| Polish   |                  |       |           |
| Symmetry   |                  |       |           |
| Fluorescence   |                  |       |           |
| Inscription(s)   |                  |       |           |
| Comments: This Laboratory Grown Diamond was created by Chemical Vapor Deposition (CVD) growth process.<br>Type IIa |                  |       |           |