



ELECTRONIC COPY

LG654491366
Report verification at igi.org



October 3, 2024

IGI Report Number **LG654491366**

Description **LABORATORY GROWN DIAMOND**

Shape and Cutting Style **CUSHION BRILLIANT**

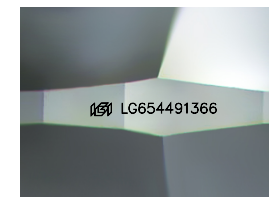
Measurements **12.04 X 8.78 X 5.92 MM**

GRADING RESULTS

Carat Weight **5.24 CARATS**

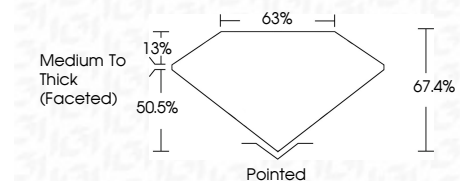
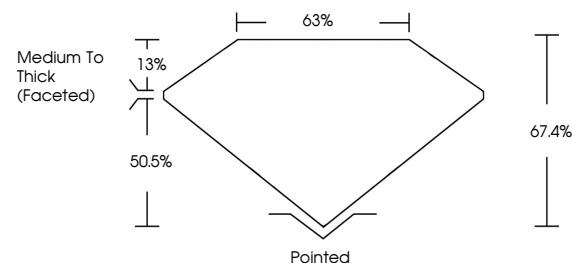
Color Grade **F**

Clarity Grade **VS 1**

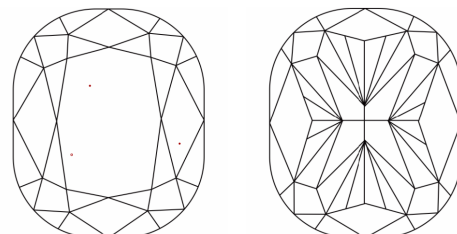


Sample Image Used

PROPORTIONS



CLARITY CHARACTERISTICS



KEY TO SYMBOLS

Red symbols indicate internal characteristics.
Green symbols indicate external characteristics.

COLOR

D E F G H I J Faint Very Light Light

CLARITY

IF	VS ¹⁻²	VS ¹⁻²	SI ¹⁻²	I ¹⁻³
Internally Flawless	Very Very Slightly Included	Very Slightly Included	Slightly Included	Included

ADDITIONAL GRADING INFORMATION

Polish **EXCELLENT**

Symmetry **EXCELLENT**

Fluorescence **NONE**

Inscription(s) **IGI LG654491366**

Comments: This Laboratory Grown Diamond was created by Chemical Vapor Deposition (CVD) growth process. Type IIa



IGI



October 3, 2024
IGI Report No LG654491366
CUSHION BRILLIANT

12.04 X 8.78 X 5.92 MM

5.24 CARATS
F

Carat Weight
Color Grade
Clarity Grade
Table
Girdle
Culet
Polish
Symmetry
Fluorescence
Inscription(s)

67.4%
63%

Medium To Thick (Faceted)

Pointed
EXCELLENT
EXCELLENT
NONE
IGI LG654491366

Comments: This Laboratory Grown Diamond was created by Chemical Vapor Deposition (CVD) growth process. Type IIa