



ELECTRONIC COPY

LG655451755
Report verification at igi.org



October 2, 2024

IGI Report Number **LG655451755**

Description **LABORATORY GROWN DIAMOND**

Shape and Cutting Style **PRINCESS CUT**

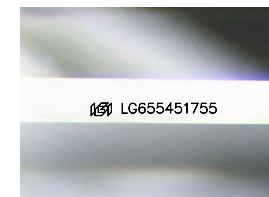
Measurements **7.41 X 7.37 X 5.33 MM**

GRADING RESULTS

Carat Weight **2.52 CARATS**

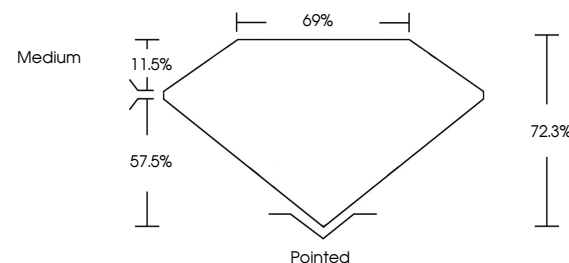
Color Grade **G**

Clarity Grade **VVS 2**

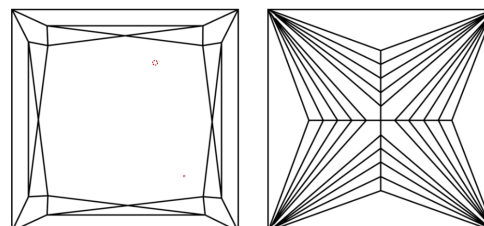


Sample Image Used

PROPORTIONS



CLARITY CHARACTERISTICS



KEY TO SYMBOLS

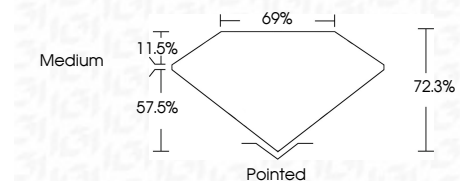
Red symbols indicate internal characteristics.
Green symbols indicate external characteristics.

COLOR

D E F G H I J Faint Very Light Light

CLARITY

IF	VS ¹⁻²	VS ¹⁻²	SI ¹⁻²	I ¹⁻³
Internally Flawless	Very Very Slightly Included	Very Slightly Included	Slightly Included	Included



ADDITIONAL GRADING INFORMATION

Polish **EXCELLENT**

Symmetry **EXCELLENT**

Fluorescence **NONE**

Inscription(s) **IGI LG655451755**

Comments: This Laboratory Grown Diamond was created by Chemical Vapor Deposition (CVD) growth process.
Type IIa



IGI



October 2, 2024
IGI Report No. LG655451755
PRINCESS CUT

2.52 CARATS
G

7.41 X 7.37 X 5.33 MM
VVS 2
72.3%
69%
Medium

Pointed
EXCELLENT
EXCELLENT
NONE
IGI LG655451755

Comments: This Laboratory Grown Diamond was created by Chemical Vapor Deposition (CVD) growth process.
Type IIa