



ELECTRONIC COPY

LABORATORY GROWN DIAMOND REPORT

October 3, 2024	
IGI Report Number	LG655451769
Description	LABORATORY GROWN DIAMOND
Shape and Cutting Style	CUT CORNERED RECTANGULAR MODIFIED BRILLIANT
Measurements	6.70 X 4.98 X 3.35 MM

GRADING RESULTS

Carat Weight	1.02 CARAT
Color Grade	D
Clarity Grade	VVS 2

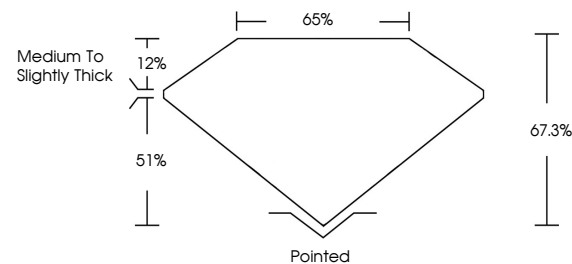
ADDITIONAL GRADING INFORMATION

Polish	EXCELLENT
Symmetry	EXCELLENT
Fluorescence	NONE
Inscription(s)	151 LG655451769

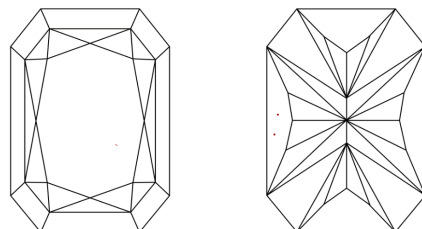
Comments: This Laboratory Grown Diamond was created by Chemical Vapor Deposition (CVD) growth process.
Type IIa

LG655451769
Report verification at lgi.org

PROPORTIONS

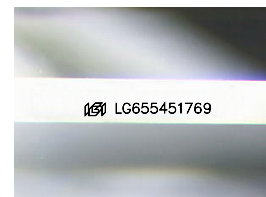


CLARITY CHARACTERISTICS



KEY TO SYMBOLS

Red symbols indicate internal characteristics.
Green symbols indicate external characteristics.



Sample Image Used

COLOR

D E F G H I J Faint Very Light Light

CLARITY

IF	VVS ¹⁻²	VS ¹⁻²	SI ¹⁻²	I ¹⁻³
Internally Flawless	Very Very Slightly Included	Very Slightly Included	Slightly Included	Included



© IGI 2020, International Gemological Institute

FD - 10 20

www.igi.org

LABORATORY GROWN DIAMOND REPORT



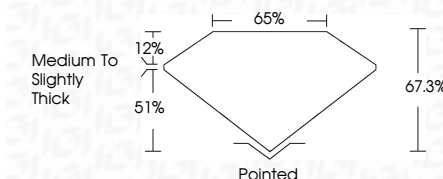
October 3, 2024	
IGI Report Number	LG655451769
Description	LABORATORY GROWN DIAMOND

Shape and Cutting Style

Measurements **6.70 X 4.98 X 3.35 MM**

GRADING RESULTS

Carat Weight	1.02 CARAT
Color Grade	D
Clarity Grade	VVS 2



ADDITIONAL GRADING INFORMATION

Polish	EXCELLENT
Symmetry	EXCELLENT
Fluorescence	NONE
Inscription(s)	 LG655451769

Comments: This Laboratory Grown Diamond was created by Chemical Vapor Deposition (CVD) growth process.
Type IIa



IG

October 3, 2024	GI Report No. LG55461749	CU CORNERED RECT. MODIFIED BRILLIANT
10.70 X 4.95 X 3.35 MM	Color Grade	1.02 CABAT
	Clarity Grade	VVS 2
	Depth	67.3%
	Table	65%
	Girdle	Medium to slightly Thick
	Culet	Pointed
	Polish	EXCELLENT
	Symmetry	EXCELLENT
	Fluorescence	NONE
	Inscriptions(s)	6891 LG55461749

Comments: This is a Chemically Grown Diamond was created by Chemical Vapor Deposition (CVD) growth process.

Type IIA