



ELECTRONIC COPY

LG660484855
Report verification at igi.org



October 23, 2024

IGI Report Number **LG660484855**

Description **LABORATORY GROWN DIAMOND**

Shape and Cutting Style **CUT CORNERED
RECTANGULAR MODIFIED
BRILLIANT**

Measurements **17.74 X 12.27 X 8.31 MM**

GRADING RESULTS

Carat Weight **16.51 CARATS**

Color Grade **E**

Clarity Grade **VVS 2**

LABORATORY GROWN DIAMOND REPORT

October 23, 2024

IGI Report Number **LG660484855**

Description **LABORATORY GROWN DIAMOND**

Shape and Cutting Style **CUT CORNERED RECTANGULAR
MODIFIED BRILLIANT**

Measurements **17.74 X 12.27 X 8.31 MM**

GRADING RESULTS

Carat Weight **16.51 CARATS**

Color Grade **E**

Clarity Grade **VVS 2**

ADDITIONAL GRADING INFORMATION

Polish **EXCELLENT**

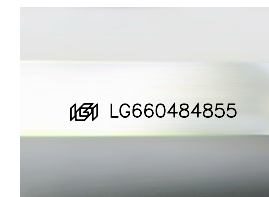
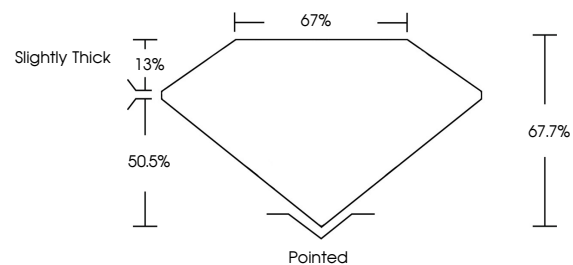
Symmetry **EXCELLENT**

Fluorescence **NONE**

Inscription(s) **IGI LG660484855**

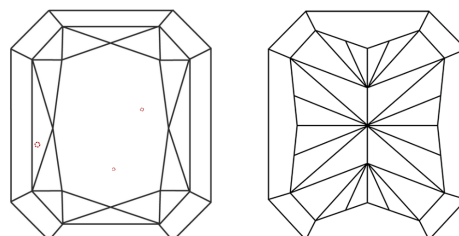
Comments: This Laboratory Grown Diamond was created by Chemical Vapor Deposition (CVD) growth process. Type IIa

PROPORTIONS



Sample Image Used

CLARITY CHARACTERISTICS



KEY TO SYMBOLS

Red symbols indicate internal characteristics.
Green symbols indicate external characteristics.

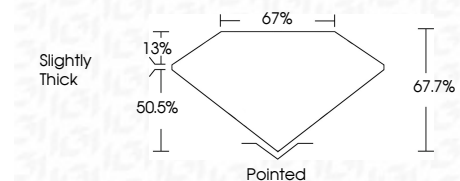
COLOR

D E F G H I J Faint Very Light Light

CLARITY

IF VS¹⁻² VS¹⁻² SI¹⁻² I¹⁻³

Internally Flawless Very Very Slightly Included Very Slightly Included Slightly Included Included



ADDITIONAL GRADING INFORMATION

Polish **EXCELLENT**

Symmetry **EXCELLENT**

Fluorescence **NONE**

Inscription(s) **IGI LG660484855**

Comments: This Laboratory Grown Diamond was created by Chemical Vapor Deposition (CVD) growth process. Type IIa



IGI



October 23, 2024
IGI Report No. LG660484855
CUT CORNERED RECT. MODIFIED BRILLIANT
17.74 X 12.27 X 8.31 MM
16.51 CARATS
E
VVS 2
67.7%
67%
Slightly Thick
Pointed
EXCELLENT
EXCELLENT
NONE
IGI LG660484855

Comments: This Laboratory Grown Diamond was created by Chemical Vapor Deposition (CVD) growth process. Type IIa