



**ELECTRONIC COPY**

## LABORATORY GROWN DIAMOND REPORT

December 4, 2024	
IGI Report Number	LG662473895
Description	LABORATORY GROWN DIAMOND
Shape and Cutting Style	PRINCESS CUT
Measurements	7.73 X 7.68 X 5.65 MM

## GRADING RESULTS

Carat Weight	3.02 CARATS
Color Grade	E
Clarity Grade	VVS 2

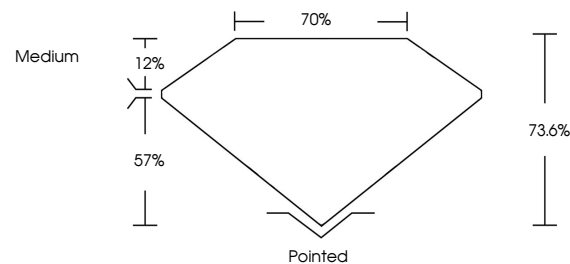
### ADDITIONAL GRADING INFORMATION

Polish	EXCELLENT
Symmetry	EXCELLENT
Fluorescence	NONE
Inscription(s)	151 LG662473895

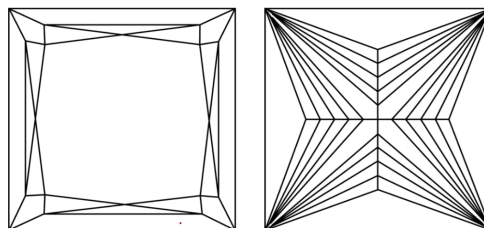
Comments: This Laboratory Grown Diamond was created by Chemical Vapor Deposition (CVD) growth process.  
Type IIa

LG662473895  
Report verification at [igi.org](https://igi.org)

## PROPORTIONS

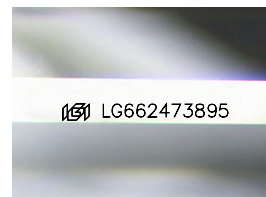


## CLARITY CHARACTERISTICS



### KEY TO SYMBOLS

Red symbols indicate internal characteristics.  
Green symbols indicate external characteristics.



Sample Image Used

## COLOR

D E F G H I J Faint Very Light Light

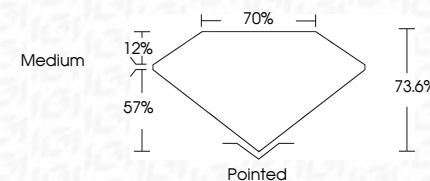
## CLARITY

IF	VS <sup>1-2</sup>	VS <sup>1-2</sup>	SI <sup>1-2</sup>	I <sup>1-3</sup>
Internally Flawless	Very Very Slightly Included	Very Slightly Included	Slightly Included	Included

## LABORATORY GROWN DIAMOND REPORT



December 4, 2024	
IGI Report Number	LG662473895
Description	LABORATORY GROWN DIAMOND
Shape and Cutting Style	PRINCESS CUT
Measurements	7.73 X 7.68 X 5.65 MM
<b>GRADING RESULTS</b>	
Carat Weight	3.02 CARATS
Color Grade	E
Clarity Grade	VVS 2



### ADDITIONAL GRADING INFORMATION

Polish	EXCELLENT
Symmetry	EXCELLENT
Fluorescence	NONE
Inscription(s)	<del>163</del> LG662473895
<p>Comments: This Laboratory Grown Diamond was created by Chemical Vapor Deposition (CVD) growth process.</p> <p>Type IIa</p>	



© IGI 2020, International Gemological Institute

FD - 10 20



THIS DOCUMENT WAS PRODUCED WITH THE FOLLOWING SECURITY MEASURES: SPECIAL DOCUMENT PAPER, INK SCREENS, WATERMARK, BACKGROUND DESIGNS, HOLOGRAM AND OTHER SECURITY FEATURES NOT LISTED AND DO EXCEED DOCUMENT SECURITY INDUSTRY GUIDELINES

**www.igi.org**

December 4, 2024  
GI Report No LG662473895

<b>GR Report No</b>	<b>G560273995</b>
<b>PRINCESS CUT</b>	<b>3.02 CARATS</b>
<b>7.73 X 7.68 X 5.65 MM</b>	<b>E</b>
<b>Carat Weight</b>	<b>VVS 2</b>
<b>Color Grade</b>	<b>73.6%</b>
<b>Clarity Grade</b>	<b>70%</b>
<b>Depth</b>	<b>Medium</b>
<b>Table</b>	<b>Pointed</b>
<b>Girdle</b>	<b>EXCELLENT</b>
<b>Culet</b>	<b>EXCELLENT</b>
<b>Pavil Symmetry</b>	<b>NONE</b>
<b>Fluorescence</b>	<b>None / Greenish Gray</b>

**Comments:**  
This Laboratory Grown Diamond was created by Chemical Vapor Deposition (CVD) growth process.