



ELECTRONIC COPY

LG665411171
Report verification at igi.org



November 20, 2024

IGI Report Number LG665411171

Description LABORATORY GROWN DIAMOND

Shape and Cutting Style ROUND BRILLIANT

Measurements 6.47 - 6.49 X 3.97 MM

GRADING RESULTS

Carat Weight 1.02 CARAT

Color Grade D

Clarity Grade VVS 2

Cut Grade IDEAL

November 20, 2024
IGI Report Number LG665411171
Description LABORATORY GROWN DIAMOND
Shape and Cutting Style ROUND BRILLIANT
Measurements 6.47 - 6.49 X 3.97 MM

GRADING RESULTS

Carat Weight 1.02 CARAT

Color Grade D

Clarity Grade VVS 2

Cut Grade IDEAL

ADDITIONAL GRADING INFORMATION

Polish EXCELLENT

Symmetry EXCELLENT

Fluorescence NONE

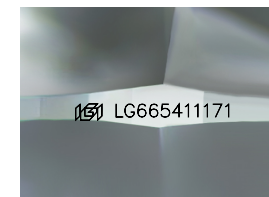
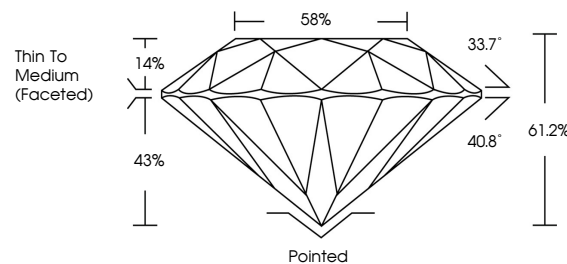
Inscription(s) IGI LG665411171

Comments: As Grown - No indication of post-growth treatment.

This Laboratory Grown Diamond was created by High Pressure High Temperature (HPHT) growth process.

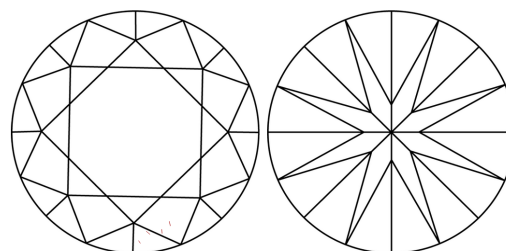
Type II

PROPORTIONS



Sample Image Used

CLARITY CHARACTERISTICS



KEY TO SYMBOLS

Red symbols indicate internal characteristics.
Green symbols indicate external characteristics.

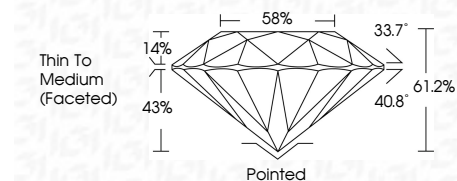
COLOR

D E F G H I J Faint Very Light Light

CLARITY

IF WS 1-2 VS 1-2 SI 1-2 I 1-3

Internally Flawless Very Very Slightly Included Very Slightly Included Slightly Included Included



ADDITIONAL GRADING INFORMATION

Polish EXCELLENT

Symmetry EXCELLENT

Fluorescence NONE

Inscription(s) IGI LG665411171

Comments: As Grown - No indication of post-growth treatment.

This Laboratory Grown Diamond was created by High Pressure High Temperature (HPHT) growth process.

Type II



IGI



November 20, 2024
IGI Report No LG665411171
ROUND BRILLIANT
6.47 - 6.49 X 3.97 MM
1.02 CARAT
Color Grade D
Clarity Grade VVS 2
Depth 61.2%
Table 58%
Girdle Thin To Medium (Faceted)
Culet Pointed
Polish EXCELLENT
Symmetry EXCELLENT
Fluorescence NONE
Inscription(s) IGI LG665411171
Comments: As Grown - No indication of post-growth treatment. This Laboratory Grown Diamond was created by High Pressure High Temperature (HPHT) growth process. Type II