



ELECTRONIC COPY

LG666408436
Report verification at igi.org



November 25, 2024

IGI Report Number **LG666408436**

Description **LABORATORY GROWN DIAMOND**

Shape and Cutting Style **OVAL BRILLIANT**

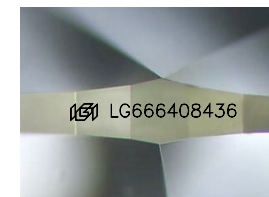
Measurements **10.03 X 7.14 X 4.51 MM**

GRADING RESULTS

Carat Weight **2.04 CARATS**

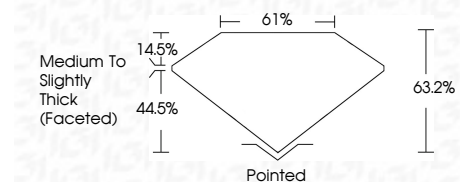
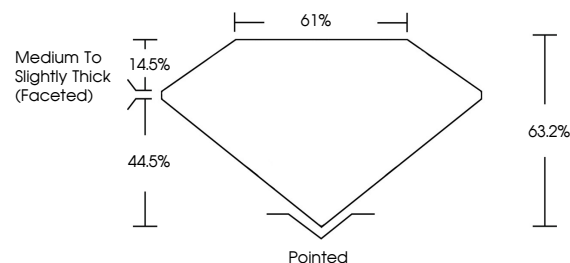
Color Grade **E**

Clarity Grade **VS 1**

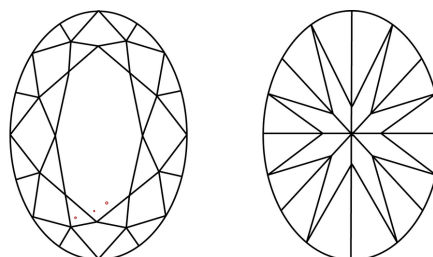


Sample Image Used

PROPORTIONS



CLARITY CHARACTERISTICS



KEY TO SYMBOLS

Red symbols indicate internal characteristics.
Green symbols indicate external characteristics.

COLOR

D E F G H I J Faint Very Light Light

CLARITY

IF	VS ¹⁻²	VS ¹⁻²	SI ¹⁻²	I ¹⁻³
Internally Flawless	Very Very Slightly Included	Very Slightly Included	Slightly Included	Included

ADDITIONAL GRADING INFORMATION

Polish **EXCELLENT**

Symmetry **EXCELLENT**

Fluorescence **NONE**

Inscription(s) **IGI LG666408436**

Comments: This Laboratory Grown Diamond was created by Chemical Vapor Deposition (CVD) growth process. Type IIa



IGI



November 25, 2024
IGI Report No LG666408436

OVAL BRILLIANT

10.03 X 7.14 X 4.51 MM

2.04 CARATS
E

Carat Weight
Color Grade
Clarity Grade
Table
Depth
Girdle
Medium to Slightly Thick (Faceted)

VS 1
63.2%
61%

Pointed
EXCELLENT
EXCELLENT
NONE
IGI LG666408436

Culet
Polish
Symmetry
Fluorescence
Inscription(s)

None
EXCELLENT
EXCELLENT
NONE
IGI LG666408436

Comments: This Laboratory Grown Diamond was created by Chemical Vapor Deposition (CVD) growth process. Type IIa