



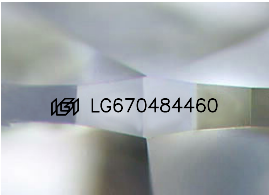
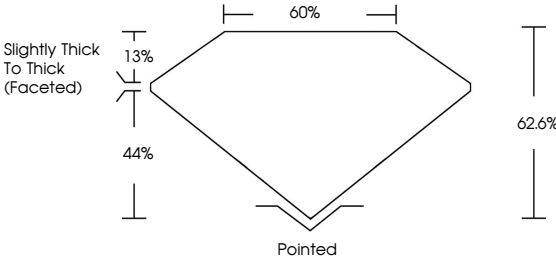
**INTERNATIONAL
GEMOLOGICAL
INSTITUTE**

ELECTRONIC COPY

LABORATORY GROWN DIAMOND REPORT

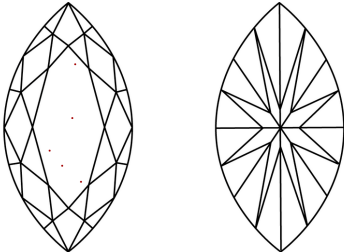
Report verification at igi.org

PROPORTIONS



Sample Image Used

CLARITY CHARACTERISTICS



KEY TO SYMBOLS

Red symbols indicate internal characteristics.
Green symbols indicate external characteristics.

COLOR

D	E	F	G	H	I	J	Faint	Very Light	Light
---	---	---	---	---	---	---	-------	------------	-------

CLARITY

IF WS¹⁻² VS¹⁻² SI¹⁻² |¹⁻³

Internally Flawless	Very Very Slightly Included	Very Slightly Included	Slightly Included	Included
------------------------	--------------------------------	---------------------------	----------------------	----------



© IGI 2020, International Gemmological Institute

FD - 10 20

www.igi.org

LABORATORY GROWN DIAMOND REPORT



January 3, 2025

IGI Report Number LG670484460

Description	LABORATORY GROWN DIAMOND
-------------	--------------------------

Shape and Cutting Style **MARQUISE BRILLIANT**

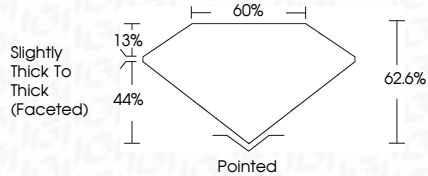
Measurements 14.01 X 7.40 X 4.63 MM

GRADING RESULTS

Carat Weight **2.87 CARATS**

Color Grade	F
-------------	---

Clarity Grade VS 1



ADDITIONAL GRADING INFORMATION

Polish EXCELLENCE

Symmetry **EXCELLENCE**

Fluorescence NONI

Inscription(s)  LG67048446

Comments: This Laboratory Grown Diamond was created by Chemical Vapor Deposition (CVD) growth process.
Type IIa



IGI

(J) Report No. LG7048440 MARQUEE BRILLIANT		2.87 CARATS F	
14.01 X 7.40 X 4.83 MM Color Weight		VS 1 62.0%	
Color Grade		60%	
Clarity Grade		Slightly Thick to Thick (faced)	
Depth		Pointed	
Table		EXCELLENT	
Girdle		EXCELLENT	
Culet		NONE	
Polish		169 LG57048440	
Symmetry			
Fluorescence			
Inscriptions(s)			
Comments: This Laboratory Grown Diamond was created by Chemical Vapor Deposition (CVD) growth process. Type IIa			

Comments:
This Laboratory Grown Diamond was created by Chemical Vapor Deposition (CVD) growth process.