

**ELECTRONIC COPY**

## LABORATORY GROWN DIAMOND REPORT

|                         |                          |
|-------------------------|--------------------------|
| February 21, 2025       |                          |
| IGI Report Number       | LG685509144              |
| Description             | LABORATORY GROWN DIAMOND |
| Shape and Cutting Style | ROUND BRILLIANT          |
| Measurements            | 8.05 - 8.08 X 5.03 MM    |

## GRADING RESULTS

|               |                     |
|---------------|---------------------|
| Carat Weight  | 2.03 CARATS         |
| Color Grade   | D                   |
| Clarity Grade | INTERNALLY FLAWLESS |
| Cut Grade     | IDEAL               |

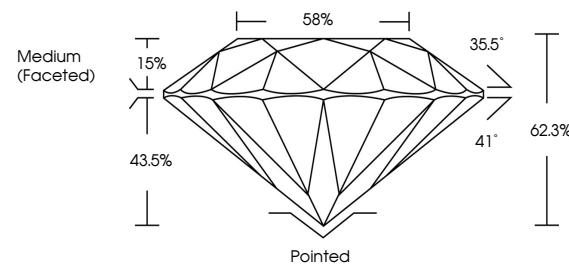
### ADDITIONAL GRADING INFORMATION

|                |   |
|----------------|---|
| Polish         | EXCELLENT   |
| Symmetry       | EXCELLENT   |
| Fluorescence   | NONE  |
| Inscription(s) |  LG685509144 |

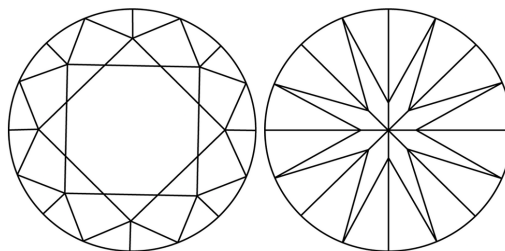
Comments: As Grown - No indication of post-growth treatment.  
This Laboratory Grown Diamond was created by High Pressure High Temperature (HPHT) growth process.  
Type II

LG685509144  
Report verification at [igi.org](https://igi.org)

## PROPORTIONS

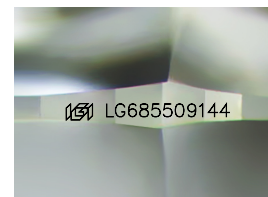


## CLARITY CHARACTERISTICS



## KEY TO SYMBOLS

Red symbols indicate internal characteristics.  
Green symbols indicate external characteristics.



Sample Image Used

**COLOR**

D E F G H I J Faint Very Light Light

## CLARITY

IF WS<sup>1-2</sup> VS<sup>1-2</sup> S<sup>1-2</sup> |<sup>1-3</sup>

|                        |                                |                           |                      |          |
|------------------------|--------------------------------|---------------------------|----------------------|----------|
| Internally<br>Flawless | Very Very<br>Slightly Included | Very<br>Slightly Included | Slightly<br>Included | Included |
|------------------------|--------------------------------|---------------------------|----------------------|----------|

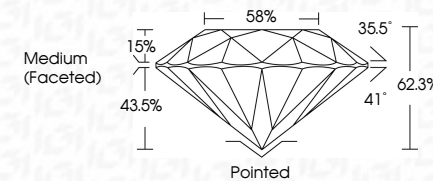
## LABORATORY GROWN DIAMOND REPORT



|                         |                          |
|-------------------------|--------------------------|
| February 21, 2025       |                          |
| IGI Report Number       | LG685509144              |
| Description             | LABORATORY GROWN DIAMOND |
| Shape and Cutting Style | ROUND BRILLIANT          |
| Measurements            | 8.05 - 8.08 X 5.03 MM    |

## GRADING RESULTS

|               |                     |
|---------------|---------------------|
| Carat Weight  | 2.03 CARATS         |
| Color Grade   | D                   |
| Clarity Grade | INTERNALLY FLAWLESS |
| Cut Grade     | IDEAL               |



### ADDITIONAL GRADING INFORMATION

|  |   |
|--|---|
| Polish   | EXCELLENT   |
| Symmetry   | EXCELLENT   |
| Fluorescence   | NONE  |
| Inscription(s)   |  LG685509144 |
| Comments: As Grown - No indication of post-growth treatment.                                       |   |
| This Laboratory Grown Diamond was created by High Pressure High Temperature (HPHT) growth process. |   |
| Type II  |   |



© IGI 2020, International Gemological Institute

FD - 10 20

February 21, 2025  
 IGI Report No LG685509144  
 BOUND BRILLIANT

|   |                       |  |                  |  |
|---|-----------------------|--|------------------|--|
|  | 9.05 - 8.08 X 5.03 MM |  | 2.08 CARATS      |  |
|   | Carat Weight          |  | IF               |  |
|   | Color Grade           |  | IDEAL            |  |
|   | Clarity Grade         |  | 62.3%            |  |
|   | Cut Grade             |  | 58%              |  |
|   | Depth                 |  | Medium (Faceted) |  |
|   | Table                 |  |                  |  |
|   | Girdle                |  |                  |  |
|   | Culet                 |  |                  |  |
|   | Polish                |  |                  |  |
|  | Symmetry              |  |                  |  |
|   | Fluorescence          |  |                  |  |
|   | Inscriptions          |  |                  |  |
|   | Inscriptions          |  |                  |  |

**Comments:**  
As Grown - No indication of post-growth treatment.  
This Laboratory Grown Diamond was created by High Pressure High Temperature (HPHT) growth process.