



ELECTRONIC COPY

LABORATORY GROWN DIAMOND REPORT

March 24, 2025	
IGI Report Number	LG692534099
Description	LABORATORY GROWN DIAMOND
Shape and Cutting Style	ROUND BRILLIANT
Measurements	7.74 - 7.80 X 4.71 MM

GRADING RESULTS

Carat Weight	1.79 CARAT
Color Grade	E
Clarity Grade	INTERNALLY FLAWLESS
Cut Grade	EXCELLENT

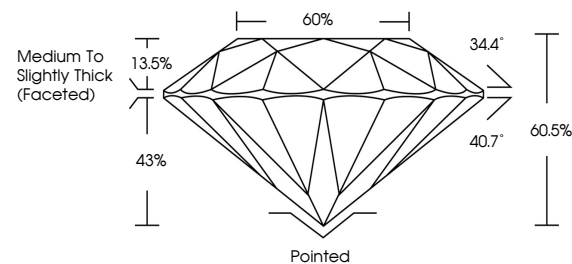
ADDITIONAL GRADING INFORMATION

Polish	EXCELLENT
Symmetry	VERY GOOD
Fluorescence	NONE
Inscription(s)	 LG692534099

Comments: As Grown - No indication of post-growth treatment.
This Laboratory Grown Diamond was created by High Pressure High Temperature (HPHT) growth process.
Type II

LG692534099
Report verification at igi.org

PROPORTIONS

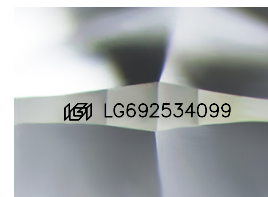


CLARITY CHARACTERISTICS



KEY TO SYMBOLS

Red symbols indicate internal characteristics.
Green symbols indicate external characteristics.



Sample Image Used

COLOR

D E F G H I J Faint Very Light Light

CLARITY

IF WS¹⁻² VS¹⁻² SI¹⁻² 1-3

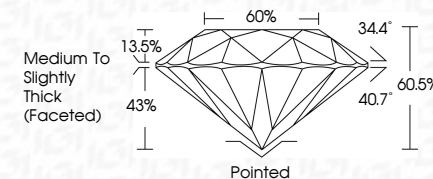
Internally Flawless	Very Very Slightly Included	Very Slightly Included	Slightly Included	Included
------------------------	--------------------------------	---------------------------	----------------------	----------



March 24, 2025	
IGI Report Number	LG692534099
Description	LABORATORY GROWN DIAMOND
Shape and Cutting Style	ROUND BRILLIANT
Measurements	7.74 - 7.80 X 4.71 MM

GRADING RESULTS

Carat Weight	1.79 CARAT
Color Grade	E
Clarity Grade	INTERNALLY FLAWLESS
Cut Grade	EXCELLENT



ADDITIONAL GRADING INFORMATION

Polish	EXCELLENT
Symmetry	VERY GOOD
Fluorescence	NONE
Inscription(s)	 LG692534099
Comments: As Grown - No indication of post-growth treatment.	
This Laboratory Grown Diamond was created by High Pressure High Temperature (HPHT) growth process.	
Type II	



© IGI 2020, International Gemological Institute

FD - 10 20



THIS DOCUMENT WAS PRODUCED WITH THE FOLLOWING SECURITY MEASURES: SPECIAL DOCUMENT PAPER, INK SCREENS, WATERMARK, BACKGROUND DESIGNS, HOLOGRAM AND OTHER SECURITY FEATURES NOT LISTED AND DO EXCEED DOCUMENT SECURITY INDUSTRY GUIDELINES

www.igi.org

March 24, 2025
GJ Report No. 16692534099

GI Report No. LSGW2534099	1.79 CARAT	E	EXCELLENT	60.5%	60%	Medium to Slightly Thick (faceted)	Pointed	EXCELLENT	VERY GOOD	NONE	see comments on page 2
ROUND BRILLIANT	1.74 - 1.80 X 1.71 MM		Clarity Grade	Cut Grade	Depth	Girdle	Culet	Polish	Symmetry	Fluorescence	
	Carat Weight	Color Grade			Table						

Comments:
As Grown - No indication of post-growth treatment.