

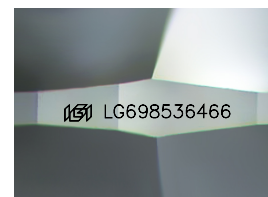
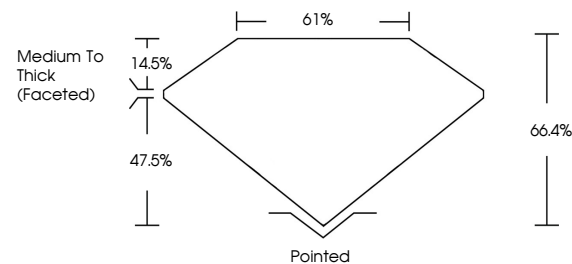


ELECTRONIC COPY

LABORATORY GROWN DIAMOND REPORT

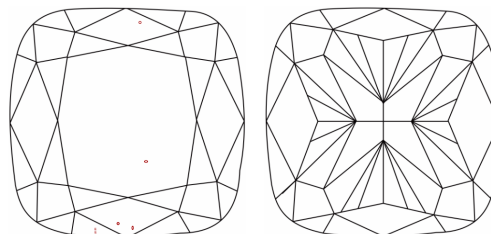
LG698536466
Report verification at igi.org

PROPORTIONS



Sample Image Used

CLARITY CHARACTERISTICS



KEY TO SYMBOLS

Red symbols indicate internal characteristics.
Green symbols indicate external characteristics.

COLOR

D E F G H I J Faint Very Light Light

CLARITY

IF	VS ¹⁻²	VS ¹⁻²	SI ¹⁻²	I ¹⁻³
Internally Flawless	Very Very Slightly Included	Very Slightly Included	Slightly Included	Included

LABORATORY GROWN DIAMOND REPORT



April 14, 2025

IGI Report Number **LG698536466**Description **LABORATORY GROWN DIAMOND**Shape and Cutting Style **SQUARE CUSHION MODIFIED
BRILLIANT**

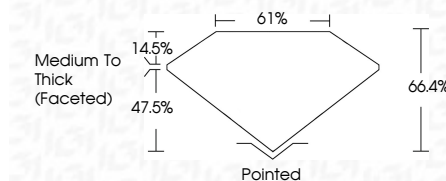
Measurements **9.74 X 9.41 X 6.25 MM**

GRADING RESULTS

Carat Weight 5.01 CARATS

Color Grade	E
-------------	---

Clarity Grade VS 1



ADDITIONAL GRADING INFORMATION

Polish EXCELLENT

Symmetry **EXCELLENT**Fluorescence NONEInscription(s) LG698536466

Comments: This Laboratory Grown Diamond was created by Chemical Vapor Deposition (CVD) growth process.
Type IIa



© IGI 2020, International Gemological Institute

FD - 10 20

www.igi.org

THIS DOCUMENT WAS PRODUCED WITH THE FOLLOWING SECURITY MEASURES: SPECIAL DOCUMENT PAPER, INK SCREENS, WATERMARK, BACKGROUND DESIGNS, HOLOGRAM AND OTHER SECURITY FEATURES NOT LISTED AND DO EXCEED DOCUMENT SECURITY INDUSTRY GUIDELINES

April 14, 2025	Report No. LG9835465	SQUARE CUBION MODIFIED BRILLIANT
		5.01 CARATS
	Carat Weight	7.74 X 7.41 X 4.25 MM
	Color Grade	
	Clarity Grade	VS 1
	Depth	66.4%
	Table	61%
	Girdle	Medium to thick (faceted)
	Culet	Pointed
	Polish	EXCELLENT
	Symmetry	EXCELLENT
	Fluorescence	NONE
	Inscription(s)	681L569835465

Comments:
 Graded by Graven Rapard using
 the International Gemological Institute (IGI)
 (VD) growth process.
 Type IIG