

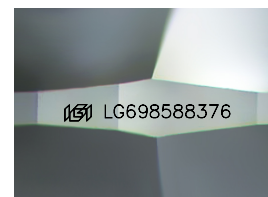
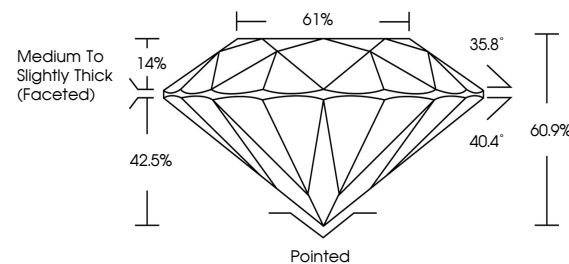


**ELECTRONIC COPY**

## LABORATORY GROWN DIAMOND REPORT

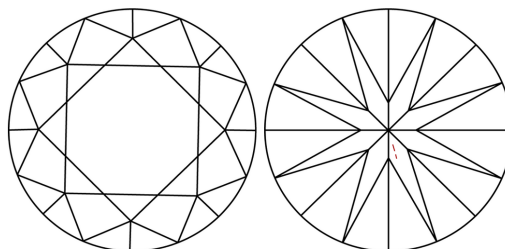
LG698588376  
Report verification at [igi.org](https://igi.org)

## PROPORTIONS



Sample Image Used

## CLARITY CHARACTERISTICS



## KEY TO SYMBOLS

Red symbols indicate internal characteristics.  
Green symbols indicate external characteristics.

## COLOR

D E F G H I J Faint Very Light Light

## CLARITY

IF WS<sup>1-2</sup> VS<sup>1-2</sup> SI<sup>1-2</sup> |<sup>1-3</sup>

Internally Flawless	Very Very Slightly Included	Very Slightly Included	Slightly Included	Included
------------------------	--------------------------------	---------------------------	----------------------	----------



© IGI 2020, International Gemological Institute

FD - 10 20

**www.igi.org**

## LABORATORY GROWN DIAMOND REPORT



April 19, 2025

IGI Report Number **LG698588376**

Description	LABORATORY GROWN DIAMOND
-------------	--------------------------

Shape and Cutting Style **ROUND BRILLIANT**

Measurements 7.27 - 7.31 X 4.45 MM

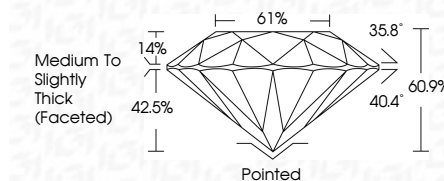
## GRADING RESULTS

Carat Weight 1.50 CARAT

Color Grade

Clarity Grade VS 1

Cut Grade **EXCELLENT**



### ADDITIONAL GRADING INFORMATION

Polish EXCELLENT

Symmetry **EXCELLENT**

Fluorescence NON

Inscription(s)  LG698588376

Comments: As Grown - No indication of post-growth treatment.

This Laboratory Grown Diamond was created by High Pressure High Temperature (HPHT) growth process.

Type II



April 10, 2025	Q Report No. LG96588376		
ROUND BRILLANT			
1.01 CARAT			
Color Grade	Clarity Grade	Cut Grade	Depth
D	VS 1	EXCELLENT	60.9%
1.50 CARAT			61%
			Medium to Slightly Thick (Faceted)
		Polished	
		EXCELLENT	
		NONE	
		lg91 LG96588376	

Comments:

As-Grown - No indication of post-growth treatment. This Laboratory Growth Diamond was created by High Pressure High Temperature (HPHT) growth process.

Type I