

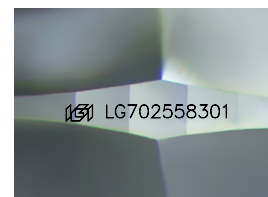
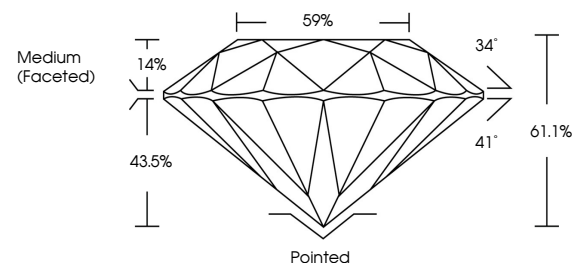


ELECTRONIC COPY

LABORATORY GROWN DIAMOND REPORT

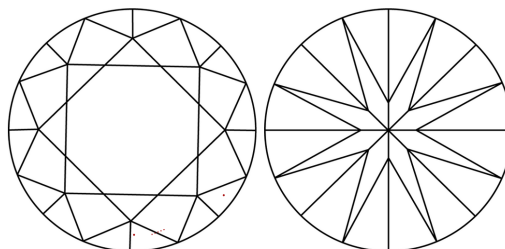
LG702558301
Report verification at igi.org

PROPORTIONS



Sample Image Used

CLARITY CHARACTERISTICS



KEY TO SYMBOLS

Red symbols indicate internal characteristics.
Green symbols indicate external characteristics.

COLOR

D E F G H I J Faint Very Light Light

CLARITY

IF WS¹⁻² VS¹⁻² S¹⁻² |¹⁻³

Internally Flawless	Very Very Slightly Included	Very Slightly Included	Slightly Included	Included
------------------------	--------------------------------	---------------------------	----------------------	----------



© IGI 2020, International Gemological Institute

FD - 10 20

www.igi.org

LABORATORY GROWN DIAMOND REPORT



April 30, 2025

IGI Report Number **LG702558301**Description **LABORATORY GROWN DIAMOND**Shape and Cutting Style **ROUND BRILLIANT**

Measurements 7.32 - 7.38 X 4.50 MM

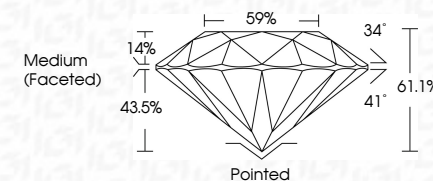
GRADING RESULTS

Carat Weight 1.50 CARAT

Color Grade D

Clarity Grade WS 2

Cut Grade **IDEAL**



ADDITIONAL GRADING INFORMATION

Polish **EXCELLENT**Symmetry **EXCELLENT**Fluorescence **NONE**Inscription(s) LG702558301

Comments: As Grown - No indication of post-growth treatment.

This Laboratory Grown Diamond was created by High Pressure High Temperature (HPHT) growth process.

Type II



	April 30, 2026	
	GJ Report No LG70258901	
	ROUND BRILLIANT	
	2.32 - 7.38 X 4.67 MM	1.50 CARAT
	Carat Weight	D
	Color Grade	VVS 2
	Clarity Grade	IDeal
	Cut Grade	61.1%
	Depth	59%
	Table	
	Girdle	Medium (Faceted)
	Culet	Poished
	Polish	EXCELLENT
	Symmetry	EXCELLENT
	Fluorescence	NONE
	Inscriptions (S)	#6 LG70258901
Comments:		
	Notes: Growth - No indication of post-growth	
	This Laboratory Grown Diamond was	
	created by High Pressure High	
	(temperature dHPH) growth process.	
	Type II	