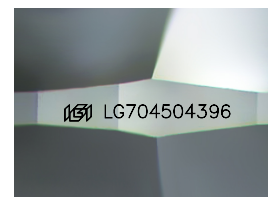
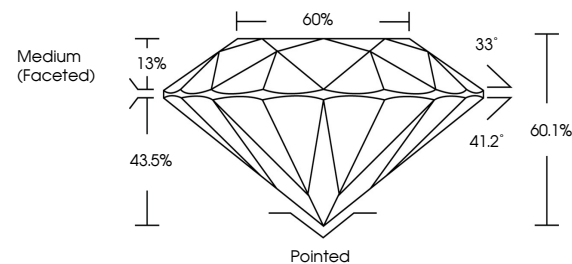


ELECTRONIC COPY

LABORATORY GROWN DIAMOND REPORT

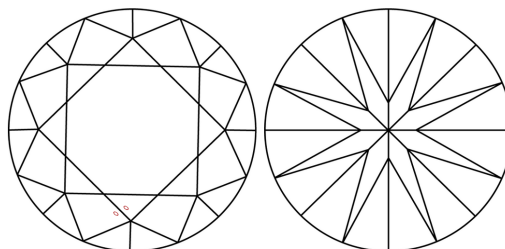
LG704504396
Report verification at igi.org

PROPORTIONS



Sample Image Used

CLARITY CHARACTERISTICS



KEY TO SYMBOLS

Red symbols indicate internal characteristics.
Green symbols indicate external characteristics.

COLOR

D E F G H I J Faint Very Light Light

CLARITY

IF WS¹⁻² VS¹⁻² SI¹⁻² |¹⁻³

Internally Flawless	Very Very Slightly Included	Very Slightly Included	Slightly Included	Included
------------------------	--------------------------------	---------------------------	----------------------	----------



© IGI 2020, International Gemological Institute

FD - 10 20

www.igi.org

LABORATORY GROWN DIAMOND REPORT



May 2, 2025

IGI Report Number **LG704504396**Description **LABORATORY GROWN DIAMOND**Shape and Cutting Style **ROUND BRILLIANT**

Measurements 8.18 - 8.26 X 4.94 MM

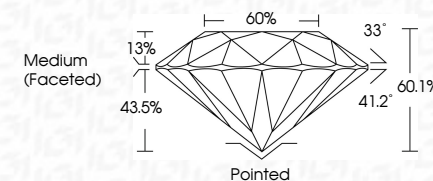
GRADING RESULTS

Carat Weight **2.04 CARATS**

Color Grade E

Clarity Grade VS 1

Cut Grade **IDEAL**



ADDITIONAL GRADING INFORMATION

Polish **EXCELLENT**Symmetry **EXCELLENT**Fluorescence NONInscription(s) LG704504396

Comments: As Grown - No indication of post-growth treatment.

This Laboratory Grown Diamond was created by High Pressure High Temperature (HPHT) growth process.

Type II



May 2, 2026	Color Weight	VS 1	Pointed
GI Report No. L6704604396	Color Grade	IDEAL	EXCELLENT
ROUND BRILLIANT	Clarity Grade	60.1%	EXCELLENT
1.01 CT - 18 x 18 x 4.54 MM	Cut Grade	60%	NONE
	Depth	Medium Faceted	681 L6704604396
	Table		
	Girdle		
	Culet		
	Polish		
	Symmetry		
	Fluorescence		
	Inscription(s)		

Comments: As Grown - No indication of post-growth treatment.
 This Laboratory Grown Diamond was created by High Pressure High Temperature (HPHT) growth process.
 Sign 1