

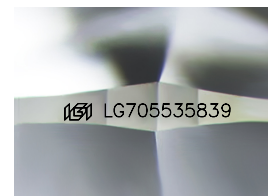
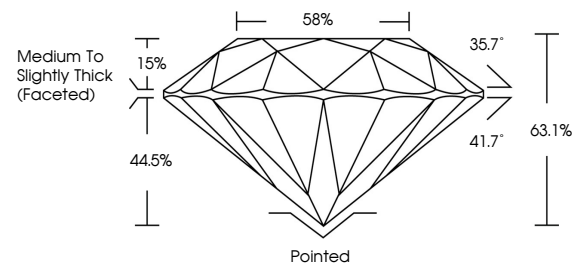


ELECTRONIC COPY

LABORATORY GROWN DIAMOND REPORT

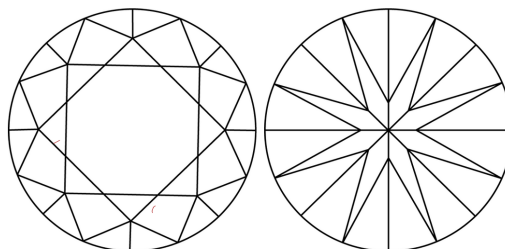
LG705535839
Report verification at igi.org

PROPORTIONS



Sample Image Used

CLARITY CHARACTERISTICS



KEY TO SYMBOLS

Red symbols indicate internal characteristics.
Green symbols indicate external characteristics.

COLOR

D E F G H I J Faint Very Light Light

CLARITY

IF WS¹⁻² VS¹⁻² SI¹⁻² |¹⁻³

Internally Flawless	Very Very Slightly Included	Very Slightly Included	Slightly Included	Included
------------------------	--------------------------------	---------------------------	----------------------	----------



© IGI 2020, International Gemological Institute

FD - 10 20

www.igi.org

LABORATORY GROWN DIAMOND REPORT



May 6, 2025

IGI Report Number **LG705535839**Description **LABORATORY GROWN DIAMOND**Shape and Cutting Style **ROUND BRILLIANT**

Measurements 6.35 - 6.39 X 4.02 MM

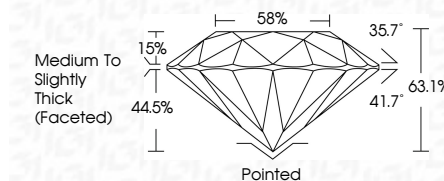
GRADING RESULTS

Carat Weight	1.00 CARAT
--------------	------------

Color Grade	E
-------------	---

Clarity Grade VVS 2

Cut Grade **EXCELLENT**



ADDITIONAL GRADING INFORMATION

Polish **EXCELLENT**Symmetry **EXCELLENT**Fluorescence **NONE**Inscription(s)  LG705535839

Comments: As Grown - No indication of post-growth treatment.

This Laboratory Grown Diamond was created by High Pressure High Temperature (HPHT) growth process.

Type II



May 4, 2026	GI Report No LG76553839	1.00 CARAT
ROUND BRILLIANT		E
		VVS 2
		EXCELLENT
		63.1%
		89%
		Medium to Slightly Thick Facet(s)
		Pointed
		EXCELLENT
		EXCELLENT
		NONE
		ISS LG76553839
		Comments: As Grown - No indication of post-growth treatment. This Laboratory Grown Diamond was created by High Pressure High Temperature (HPHT) growth process.